

The background is a solid blue color with several stylized virus particles scattered across it. The largest virus particle is on the left side, partially behind the text. It has a dark blue circular body with several protruding spikes. Other smaller virus particles are visible in the upper right and lower right areas.

COVID-19 NOVEL CORONAVIRUS

COVID Response Update



Current Situation

- **Key metrics increasing, indicate continued stress on system**
 - case counts
 - five-day test positivity rate
 - hospital and ICU admissions
 - community spread
 - VOCs
- **Younger Manitobans being hospitalized**
- **Immunizations increasing**

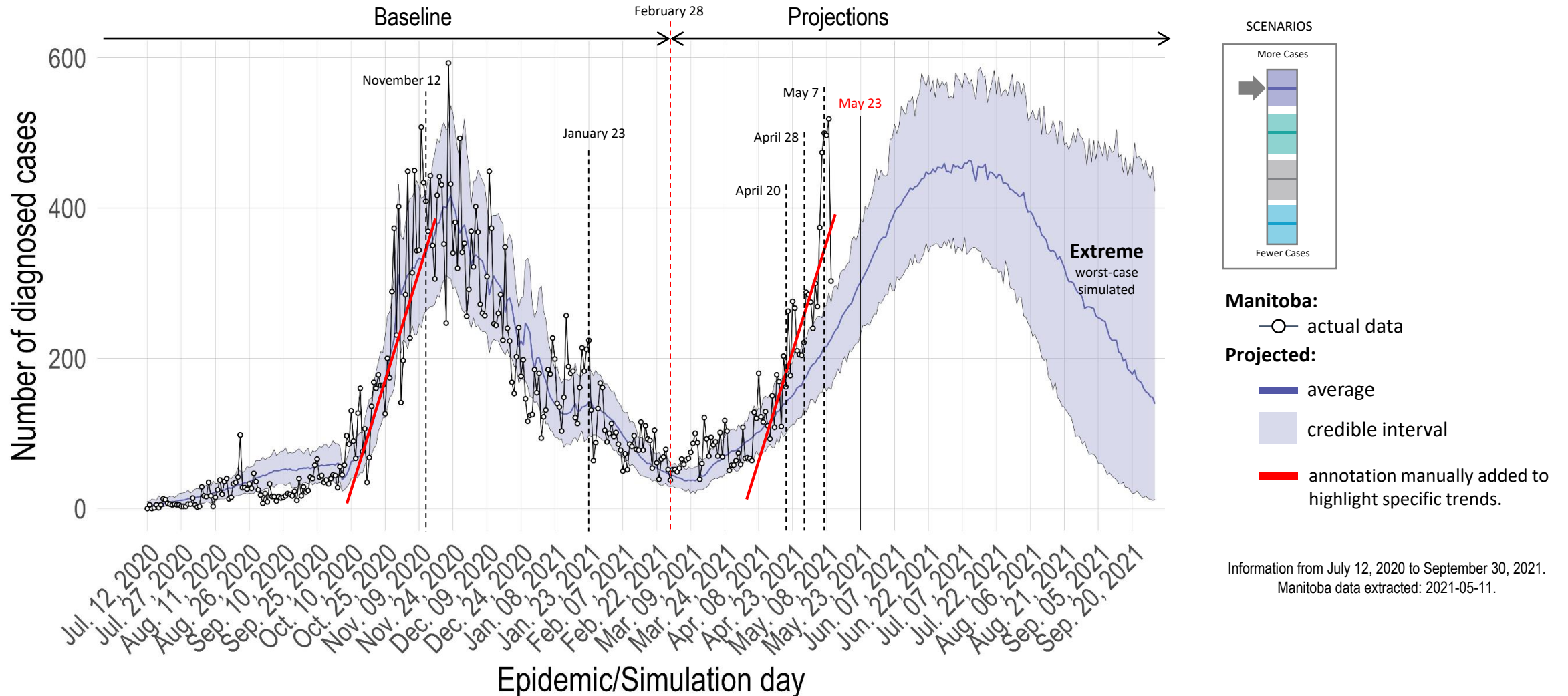
Modelling Considerations

- Model is an agent-based modelling strategy
- Uses Manitoba case data from the start of the pandemic
- Current model has been updated to include VOCs, immunization data

COVID-19 NOVEL CORONAVIRUS



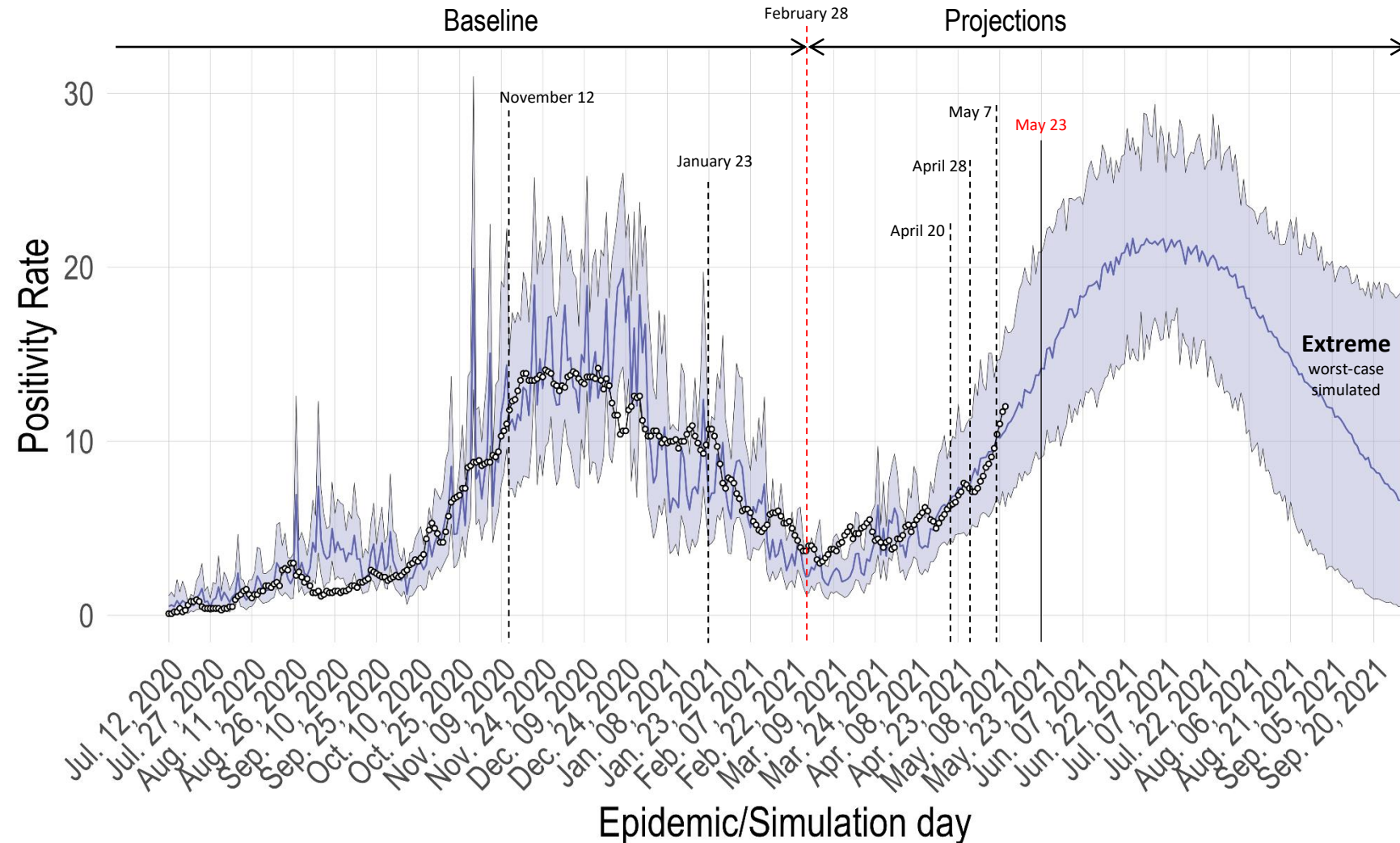
Projected Number of Diagnosed Cases (daily number of new cases)



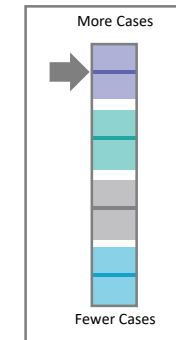
COVID-19 NOVEL CORONAVIRUS



Projected Daily Positivity Rate



SCENARIOS



Manitoba:

—○— actual data

Projected:

— average

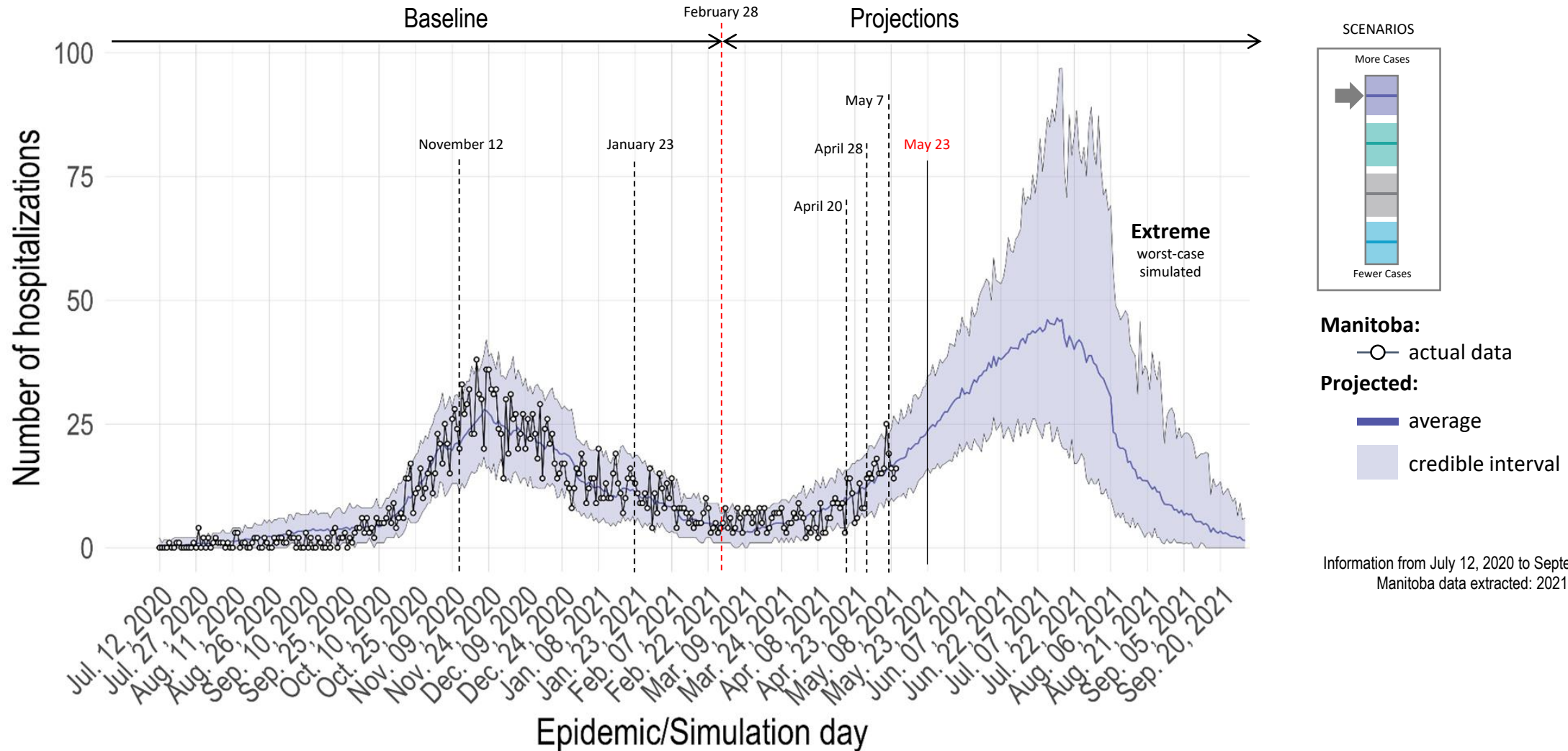
— credible interval

Information from July 12, 2020 to September 30, 2021.
Manitoba data extracted: 2021-05-11.

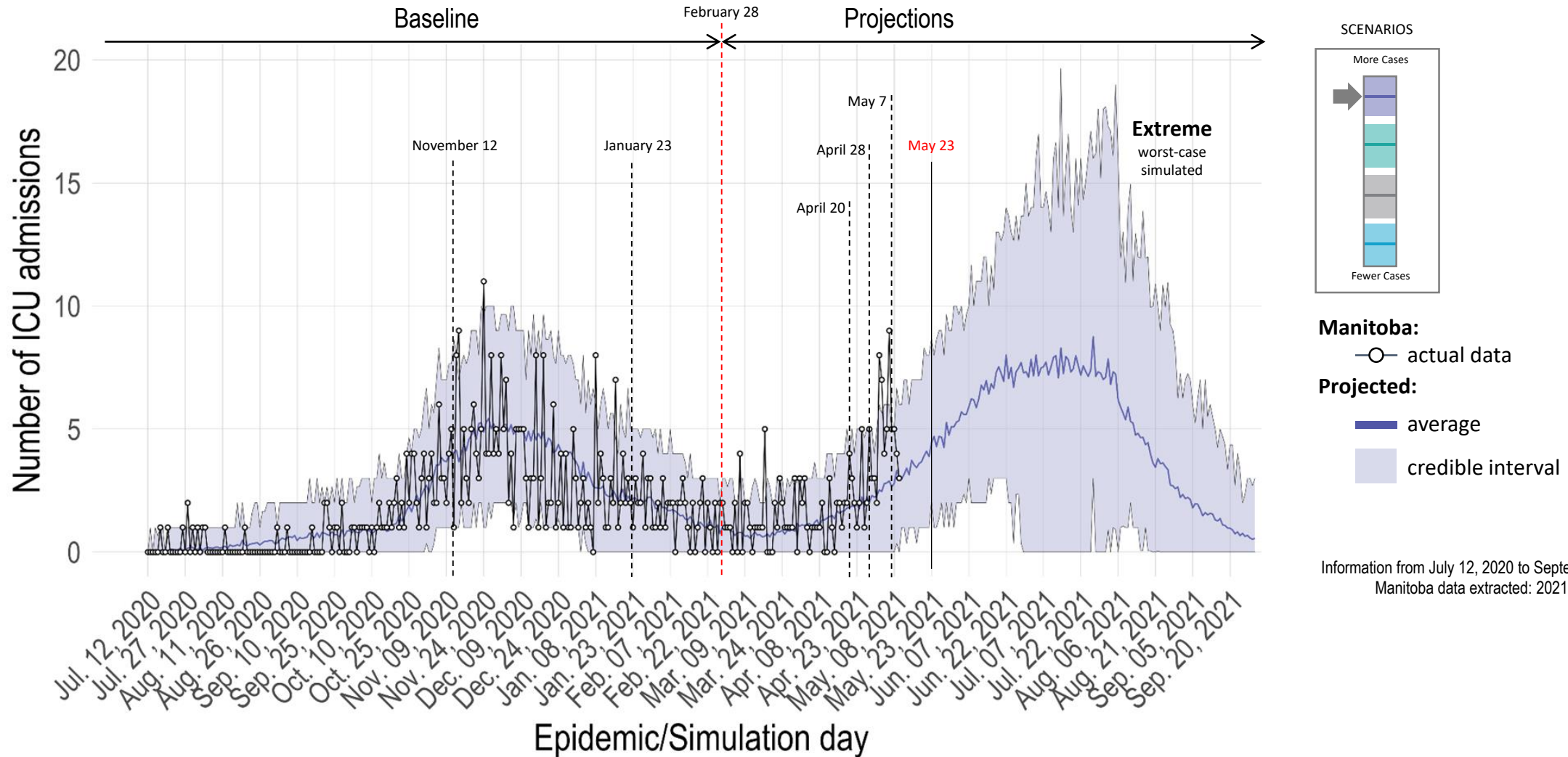
COVID-19 NOVEL CORONAVIRUS



Incident Number of Hospitalizations (daily number of admissions to clinical beds)



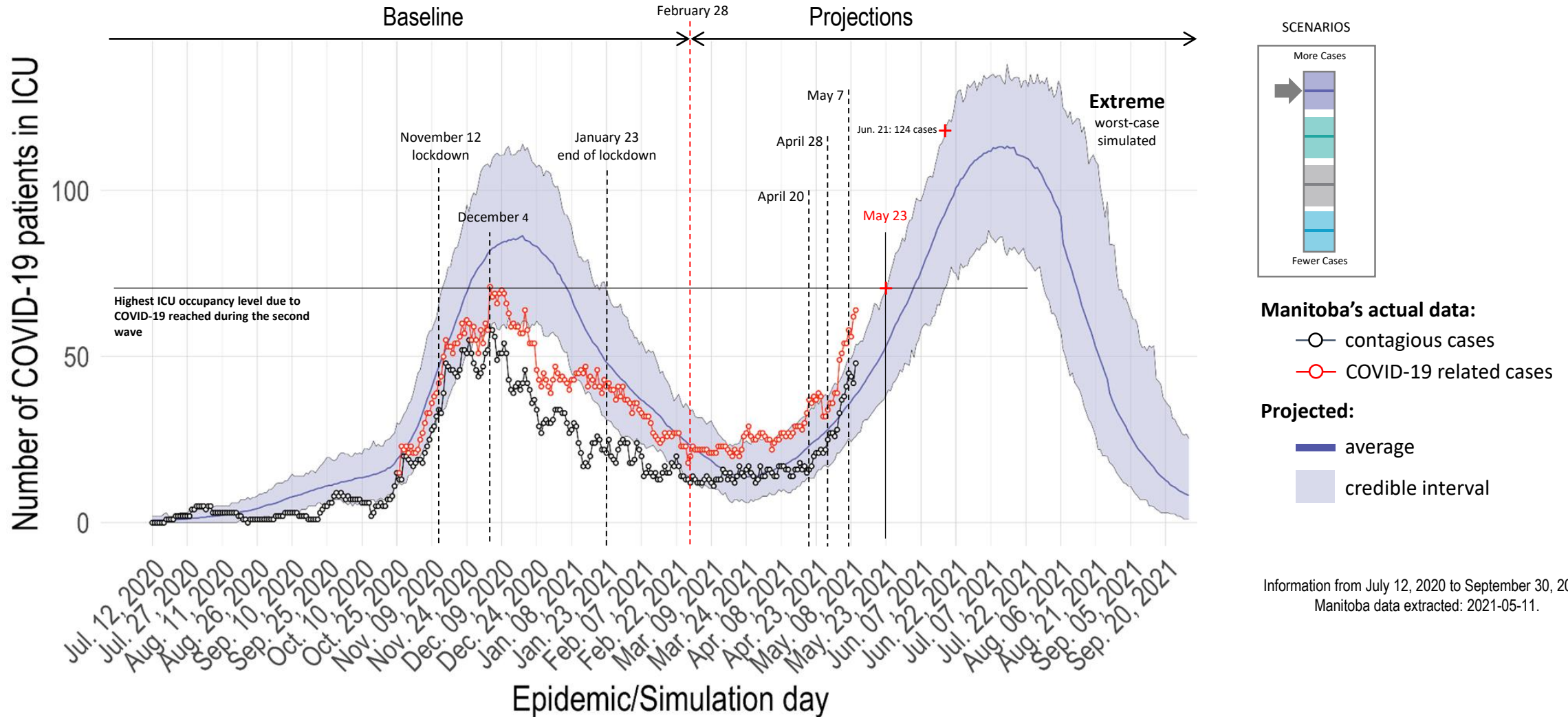
Incident Number of ICU Admissions (daily number of admissions)



COVID-19 NOVEL CORONAVIRUS



Prevalent Number of ICU Admissions (ICU occupancy)



Next Steps

- Model was used to inform current public health orders
- Without swift action, COVID-19 cases could overwhelm health system
- Need to reduce contacts, avoid close contact with others