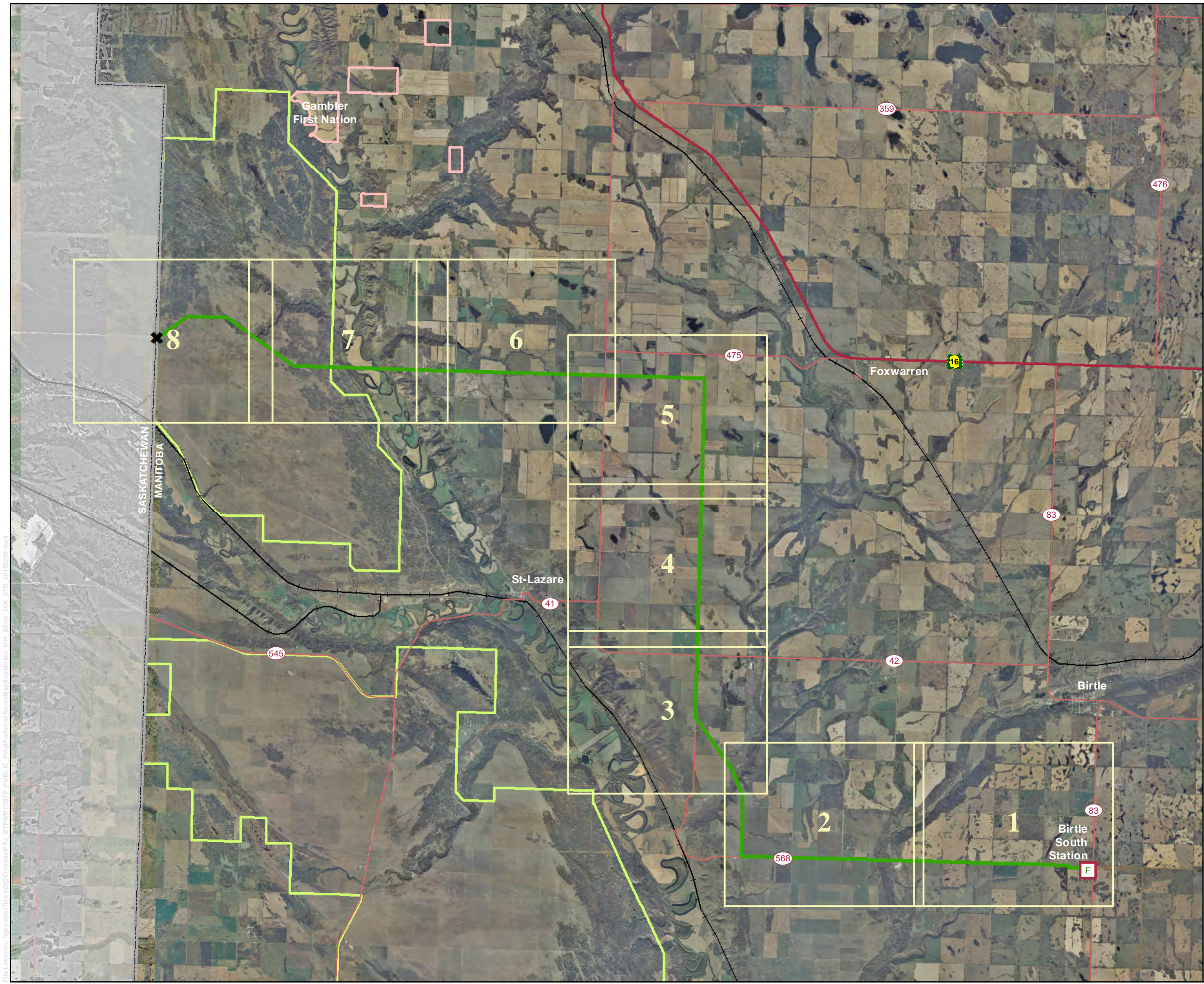


Birtle Transmission Project

- E Birtle South Station
- ✕ Border Crossing Point
- Final Preferred Route
- Road
- Transmission Line
- Railway Line
- First Nations
- Community Pasture
- Province of Manitoba Boundary



Coordinate System: UTM Zone 14N NAD83
 Data Source: MBHydro, ProvMB, NRCAN
 Date: February 9, 2018

0 2 4 Kilometres

0 1 2 Mile

N

1:120,000

Birtle Final Preferred Route

Map Folio

Draft: For Discussion Purposes Only

Birtle Transmission Project

- Border Crossing Point
- Final Preferred Route
- Road
- Transmission Line
- Railway Line
- Crown Land
- Community Pasture
- Parcel Fabric
- Province of Manitoba Boundary



Coordinate System: UTM Zone 14N NAD83
 Data Source: MBHydro, ProvMB, NRCAN
 Date: February 9, 2018

1:20,000

Birtle Final Preferred Route

Map 1

Draft: For Discussion Purposes Only

file:///C:/Users/mbh/OneDrive/Desktop/Projects/Birtle/BirtleFinalPreferredRoute/Map1/Map1.mxd

Birtle Transmission Project

- Border Crossing Point
- Final Preferred Route
- Road
- Transmission Line
- Railway Line
- Crown Land
- Community Pasture
- Parcel Fabric
- Province of Manitoba Boundary



Coordinate System: UTM Zone 14N NAD83
 Data Source: MBHydro, ProvMB, NRCAN
 Date: February 9, 2018

0 250 500 Metres
 0 1,000 2,000 Feet

N

 1:20,000

Birtle Final Preferred Route

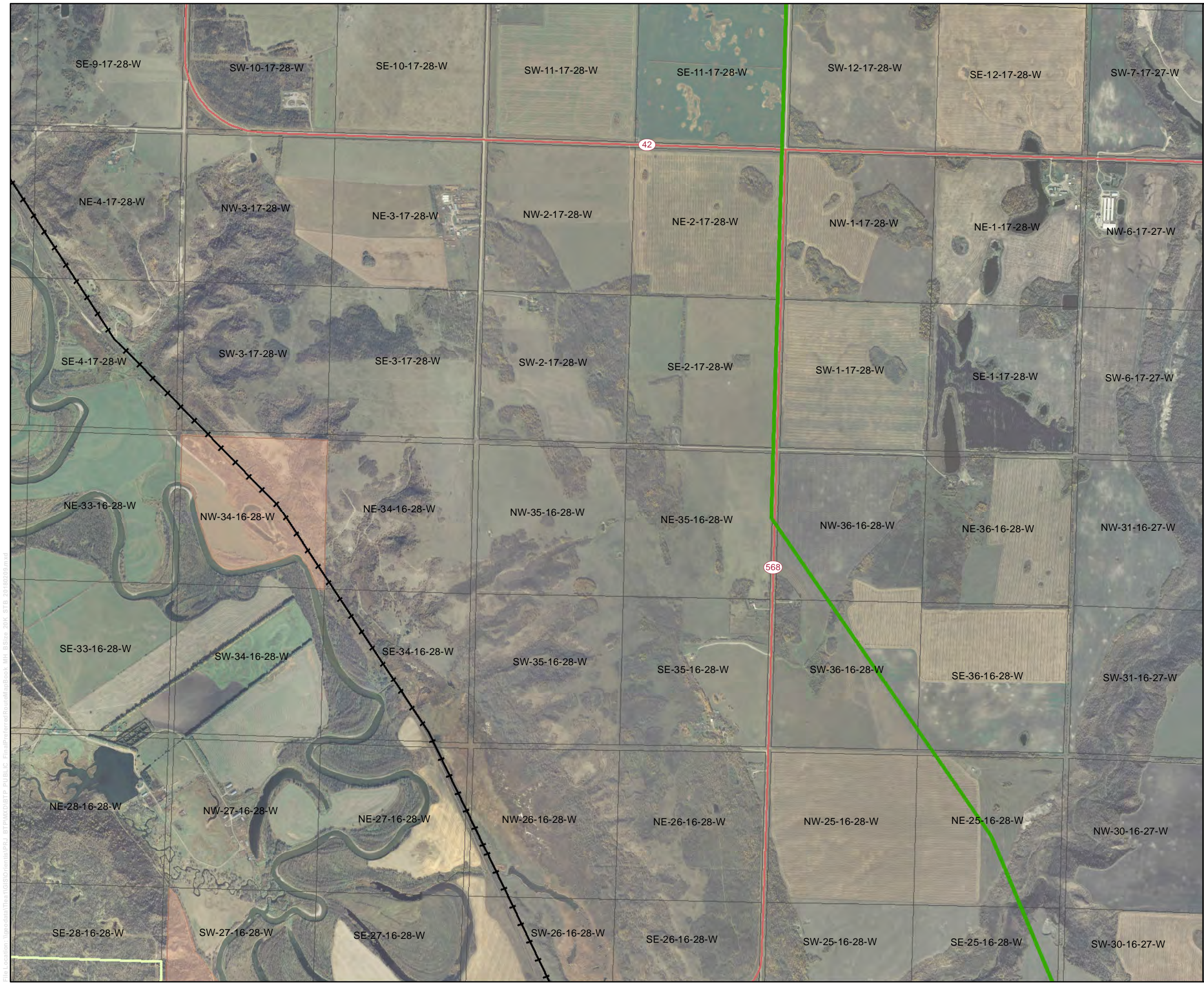
Map 2

Draft: For Discussion Purposes Only

File Location: \\gisdata\Users\T15150\Documents\PRJ_4_Birtle\Map2\Birtle_Final_Preferrred_Route\Map2.mxd

Birtle Transmission Project

- Border Crossing Point
- Final Preferred Route
- Road
- Transmission Line
- Railway Line
- Crown Land
- Community Pasture
- Parcel Fabric
- Province of Manitoba Boundary



Coordinate System: UTM Zone 14N NAD83
 Data Source: MBHydro, ProvMB, NRCAN
 Date: February 9, 2018

0 250 500 Metres
0 1,000 2,000 Feet

N

1:20,000

Birtle Final Preferred Route

Map 3

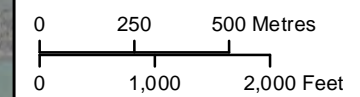
Draft: For Discussion Purposes Only

Birtle Transmission Project

- Border Crossing Point
- Final Preferred Route
- Road
- Transmission Line
- Railway Line
- Crown Land
- Community Pasture
- Parcel Fabric
- Province of Manitoba Boundary



Coordinate System: UTM Zone 14N NAD83
 Data Source: MBHydro, ProvMB, NRCAN
 Date: February 9, 2018



1:20,000

Birtle Final Preferred Route

Map 4

Draft: For Discussion Purposes Only

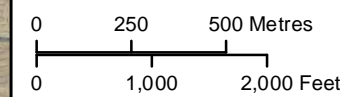
File Location: \\gpc01\GIS\Projects\Birtle\Birtle\Map4\Birtle_Final_PREFERRED_Route\Map4_Background_MH_Birtle_2018_02_09.mxd

Birtle Transmission Project

- Border Crossing Point
- Final Preferred Route
- Road
- Transmission Line
- Railway Line
- Crown Land
- Community Pasture
- Parcel Fabric
- Province of Manitoba Boundary



Coordinate System: UTM Zone 14N NAD83
 Data Source: MBHydro, ProvMB, NRCAN
 Date: February 9, 2018



1:20,000

Birtle Final Preferred Route

Map 5

Draft: For Discussion Purposes Only

File Location: \\gpc01\Users\T18180\Documents\PKA_Birtle\Map5\Birtle_Final_Pref_Route\Map5_Birtle_Final_Pref_Route.mxd

Birtle Transmission Project

- Border Crossing Point
- Final Preferred Route
- Road
- Transmission Line
- Railway Line
- Crown Land
- Community Pasture
- Parcel Fabric
- Province of Manitoba Boundary



Coordinate System: UTM Zone 14N NAD83
 Data Source: MBHydro, ProvMB, NRCAN
 Date: February 9, 2018



0 250 500 Metres
 0 1,000 2,000 Feet

1:20,000

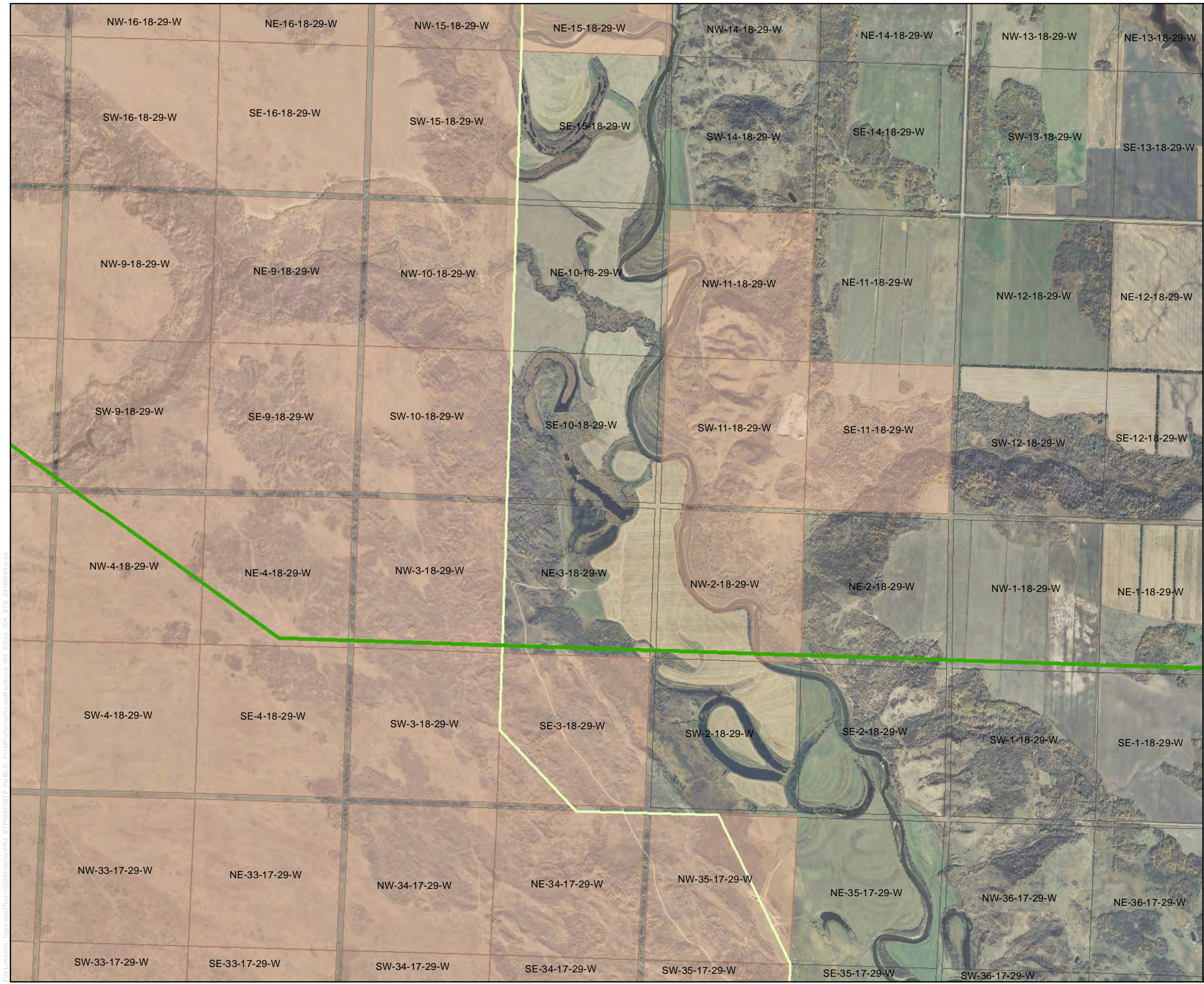
Birtle Final Preferred Route

Map 6

Draft: For Discussion Purposes Only

Birtle Transmission Project

- ✘ Border Crossing Point
- Final Preferred Route
- Road
- Transmission Line
- Railway Line
- Crown Land
- Community Pasture
- Parcel Fabric
- Province of Manitoba Boundary



Coordinate System: UTM Zone 14N NAD83
 Data Source: MBHydro, ProvMB, NRCAN
 Date: February 9, 2018

0 250 500 Metres

0 1,000 2,000 Feet

N

1:20,000

Birtle Final Preferred Route

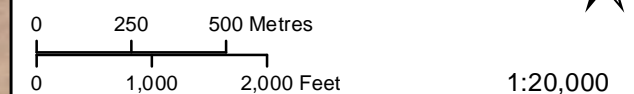
Map 7

Draft: For Discussion Purposes Only

- ✘ Border Crossing Point
- Final Preferred Route
- Road
- Transmission Line
- Railway Line
- Crown Land
- Community Pasture
- Parcel Fabric
- Province of Manitoba Boundary

SASKATCHEWAN
MANITOBA

Coordinate System: UTM Zone 14N NAD83
Data Source: MBHydro, ProvMB, NRCAN
Date: February 9, 2018



Birtle Final Preferred Route

Map 8

Draft: For Discussion Purposes Only

File Location: \\gpcdata1\Users\15150\Documents\PKL\Birtle\Map8\Birtle-Final-Preferred-Route\Map8_Background_MH_181829-W_20180209.mxd

