

MANITOBANS' VIEWS ON COVID-19: CURRENT IMPRESSIONS AND EXPECTATIONS FOR THE FUTURE

MAY 2020

PROBE RESEARCH INC.

FOR MORE INFORMATION:

Scott MacKay
President

PROBE RESEARCH INC.

603 – 191 Lombard Ave.

Winnipeg, MB R3B 0X1

(204) 926-6565

scott@probe-research.com

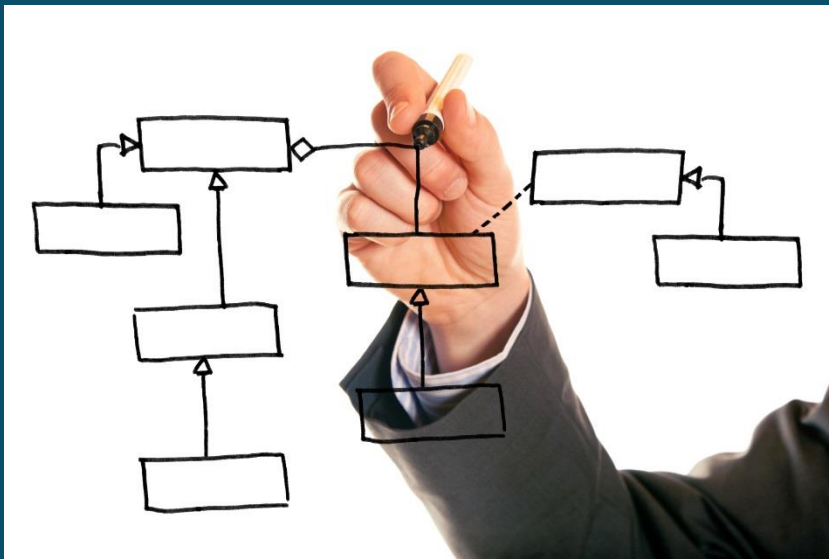
www.probe-research.com



KEY FINDINGS

- Relatively few Manitobans expect life to revert back to normal once the COVID-19 pandemic has passed. Nearly six-in-ten residents feel society will have changed deeply once the crisis is over. Around one-quarter of Manitobans, on the other hand, do expect our earlier routines and ways of life to return while one-in-five were unable to predict what kind of post COVID-19 world will emerge. Interestingly, men were twice as likely as women to expect things to go back to normal after the pandemic.
- Even as Manitobans anticipate a dramatically altered post-pandemic reality, more than nine-in-ten adults in the province feel these changes will be enduring and last for many years to come, with seven-in-ten agreeing the pandemic will cause permanent economic damage. There is a strong consensus among Manitobans from all demographic groups and among citizens from all walks of life that this will be the case.
- The proportion of Manitobans who feel COVID-19 is "overblown" has declined significantly since mid-to-late March. Only about one-in-five (down from one-third) now feel the danger is overhyped. Men – especially younger men – remain much more likely than women to see COVID-19 as overblown.
- Public confidence in the provincial government's handling of COVID-19 has increased significantly since March. Right now, three-quarters of adults are confident the provincial government is prepared to address COVID-19 compared to only six-in-ten who felt this way one month ago. Rural Manitobans and those who intend to support either the provincial Progressive Conservatives (PCs) or Manitoba Liberal party in the next election are most likely to express confidence in the provincial government's handling of COVID-19.

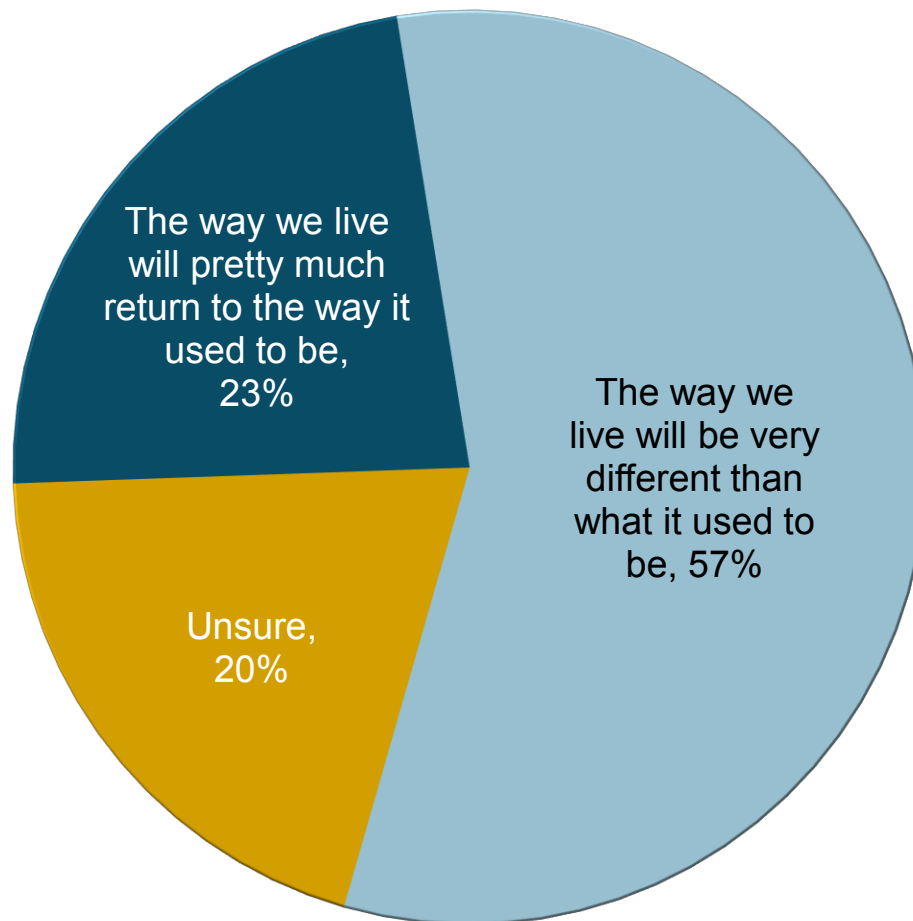
METHODOLOGY



- Probe Research conducted a survey of Manitoba adults regarding their experiences with and perspectives on the COVID-19 virus.
- Probe Research surveyed a total of N=803 Manitoba adults online between April 24th and 28th, 2020.
- Respondents were recruited from Probe Research's proprietary panel and supplemented with those from a national online panel provider.
- As an online survey is a sample of convenience, no margin-of-error can be ascribed. However, a random and representative non-convenience sample of 803 adults would have a margin of error of ± 3.46 percentage points, 19 times out of 20.
- Minor statistical weighting by age, gender and region has been applied to this sample to ensure that it corresponds with the province as a whole.

MANITOBBANS EXPECT PROFOUND SOCIAL CHANGE IN PANDEMIC AFTERMATH

Q25. "Overall, when the pandemic has passed, do you expect..."



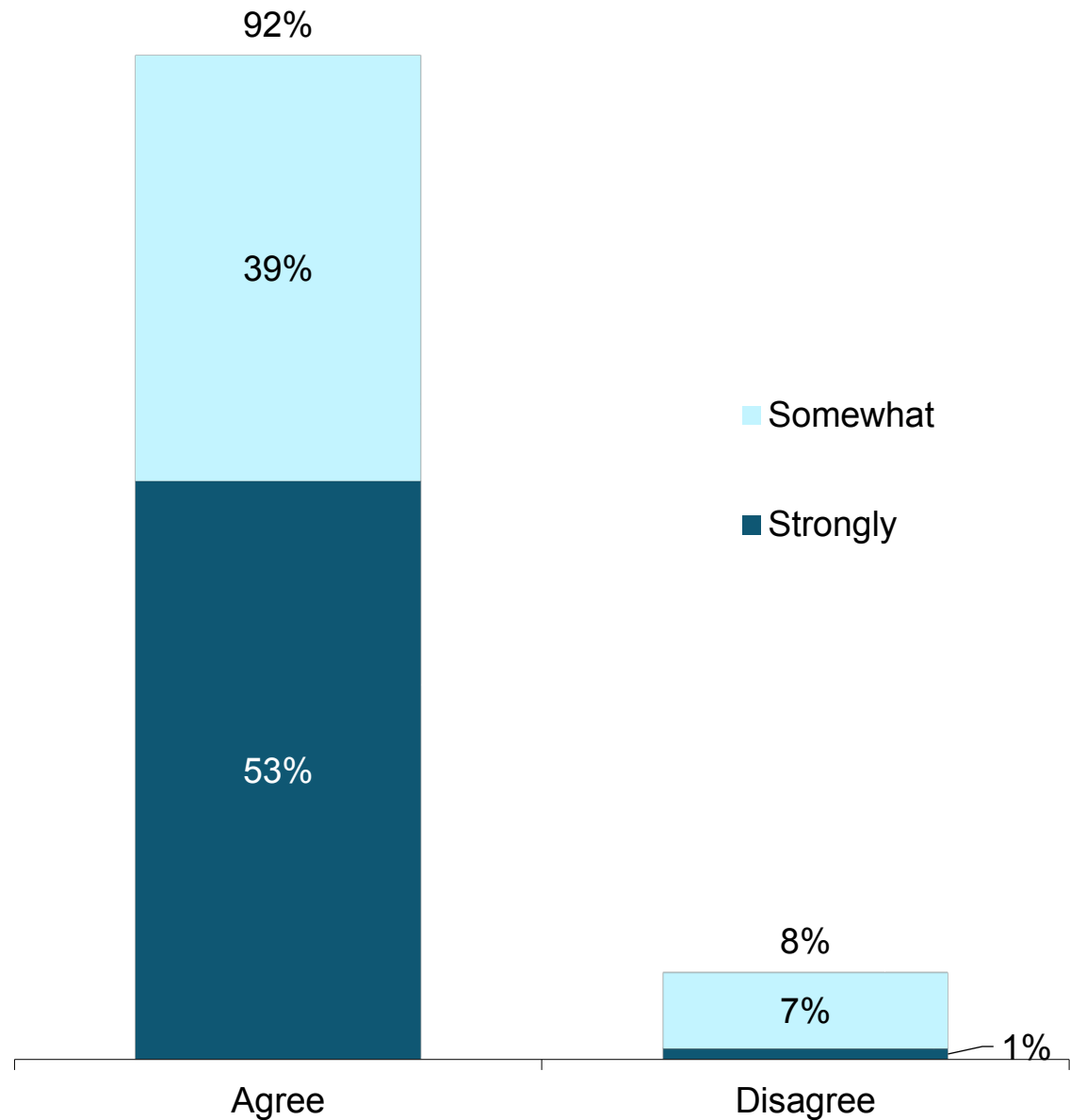
Base: All respondents (N=803)

■ Men (31% vs. 16% among women) and PC supporters (30% vs. 17% among NDP supporters) are most likely to think that life will return to the way it used to be.

MANITOBBANS EXPECT DEEP CHANGES TO HOW WE LIVE OUR LIVES

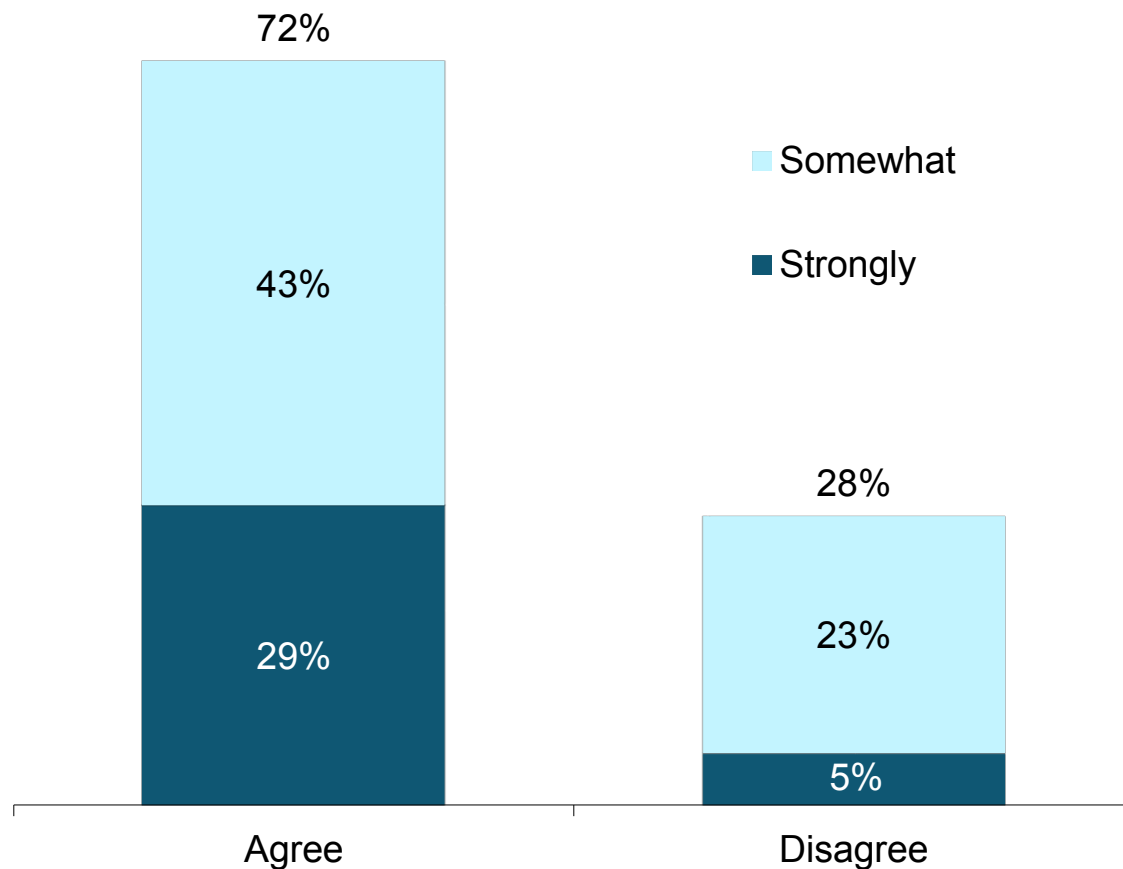
Q24b. "Please indicate the extent to which you agree or disagree with each of the following statements: The COVID-19 pandemic will affect how we live our lives for many years to come."

Base: All respondents (N=803)



SEVEN-IN-TEN BELIEVE THE PANDEMIC WILL CAUSE PERMANENT ECONOMIC DAMAGE

Q24a. "Please indicate the extent to which you agree or disagree with each of the following statements: I think the COVID-19 pandemic will cause permanent damage to our economy."



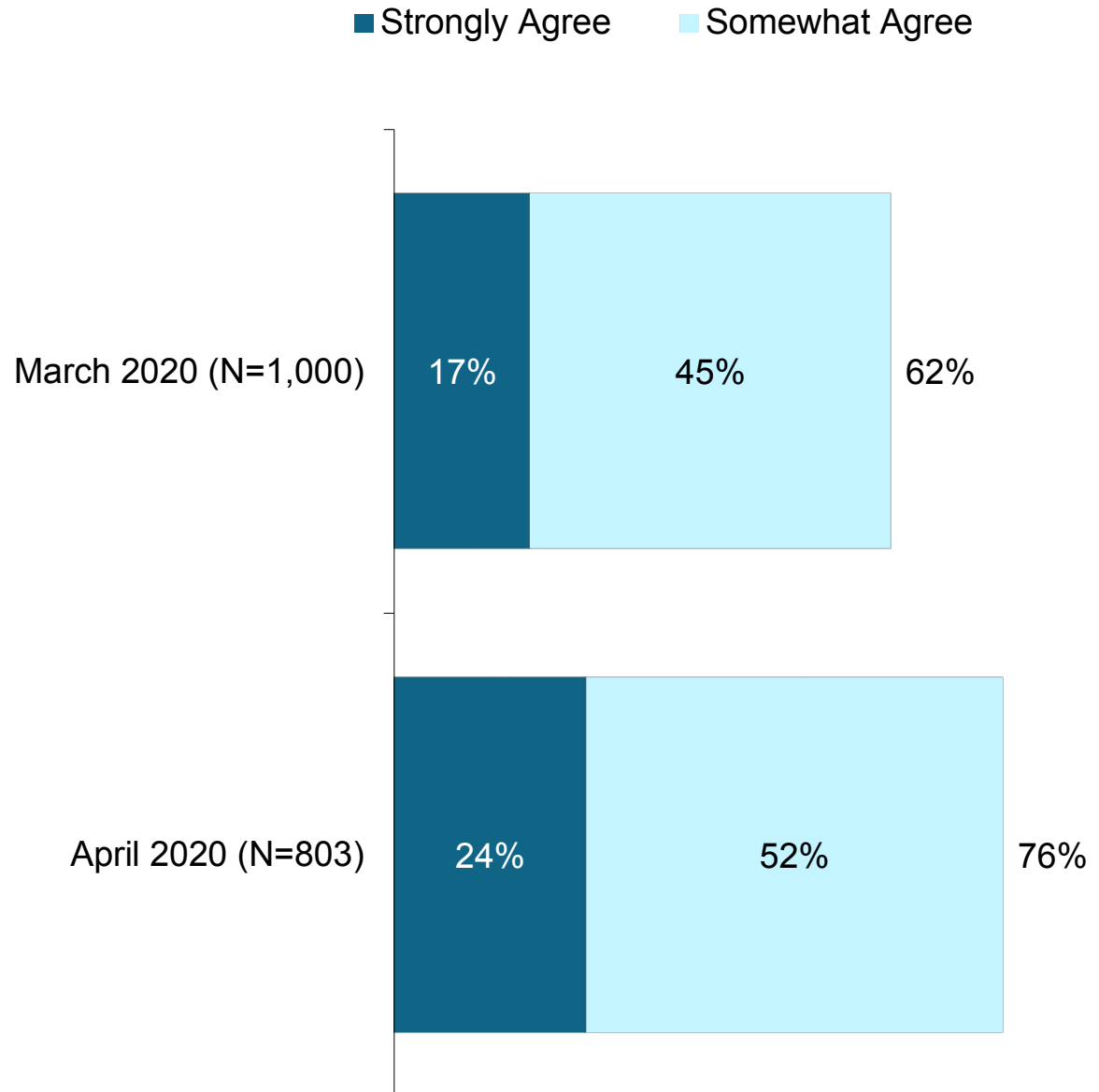
Base: All respondents (N=803)

■ Provincial Progressive Conservative voters are significantly more likely to believe the pandemic will cause permanent economic damage (81% vs. 66% among NDP supporters and 71% among Manitoba Liberal supporters).

CONFIDENCE IN PROVINCIAL GOVERNMENT ON COVID-19 IMPROVES SINCE EARLY DAYS OF CRISIS

Q1a. "The COVID-19 virus (also known as coronavirus) emerged earlier this year and has spread to several countries. Please read the following statements and indicate if you agree or disagree: I am confident our provincial government is prepared to deal with an outbreak of the COVID-19 virus here in Manitoba."

Base: All respondents (N=803)



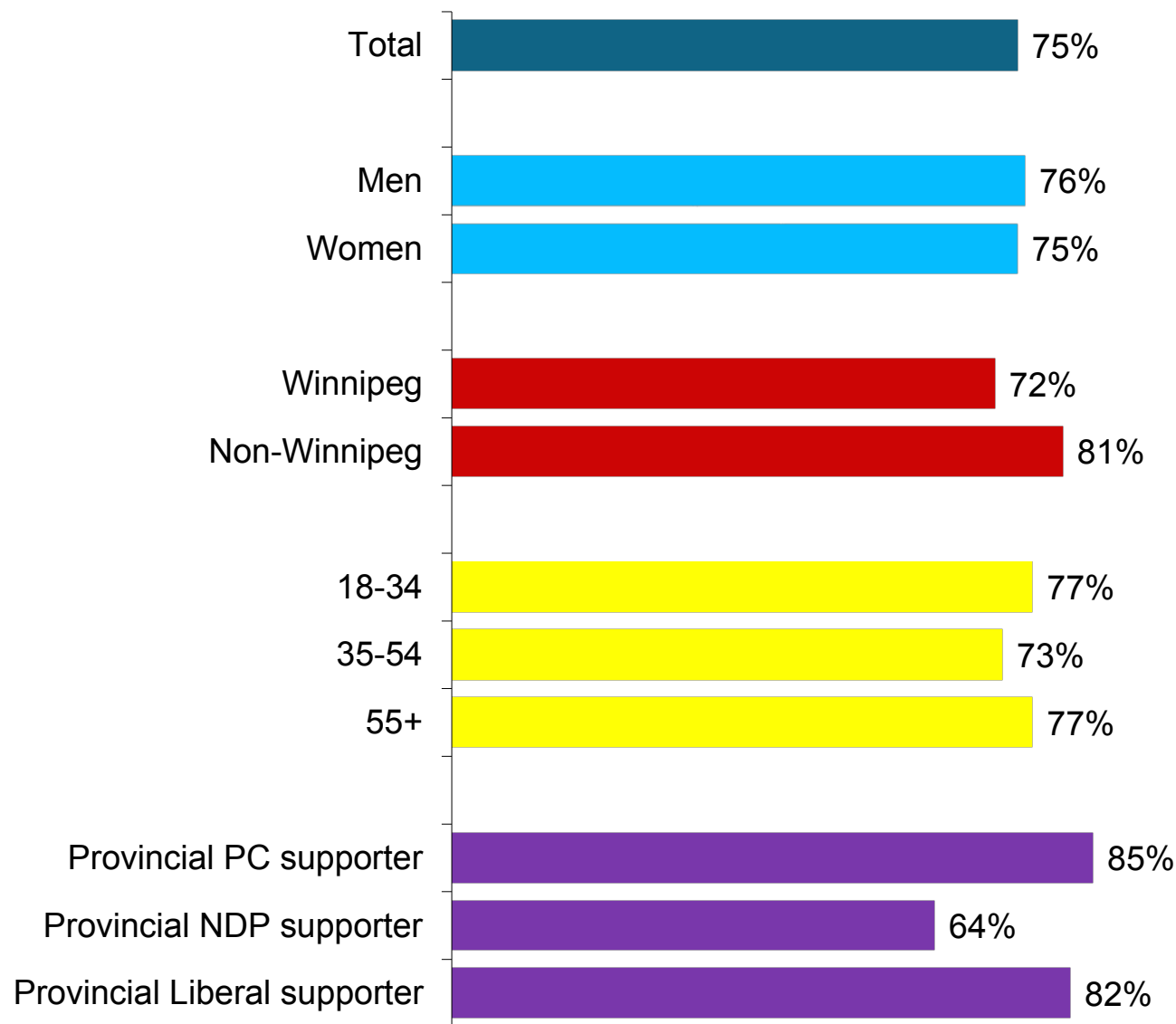
WINNIPEGGERS, NDP VOTERS LESS LIKELY TO HAVE CONFIDENCE IN THE PROVINCE

CONFIDENCE IN THE PROVINCE AMONG SUB-POPULATIONS

Q1a. "The COVID-19 virus (also known as coronavirus) emerged earlier this year and has spread to several countries. Please read the following statements and indicate if you agree or disagree: I am confident our provincial government is prepared to deal with an outbreak of the COVID-19 virus here in Manitoba."

Base: All respondents (N=803)

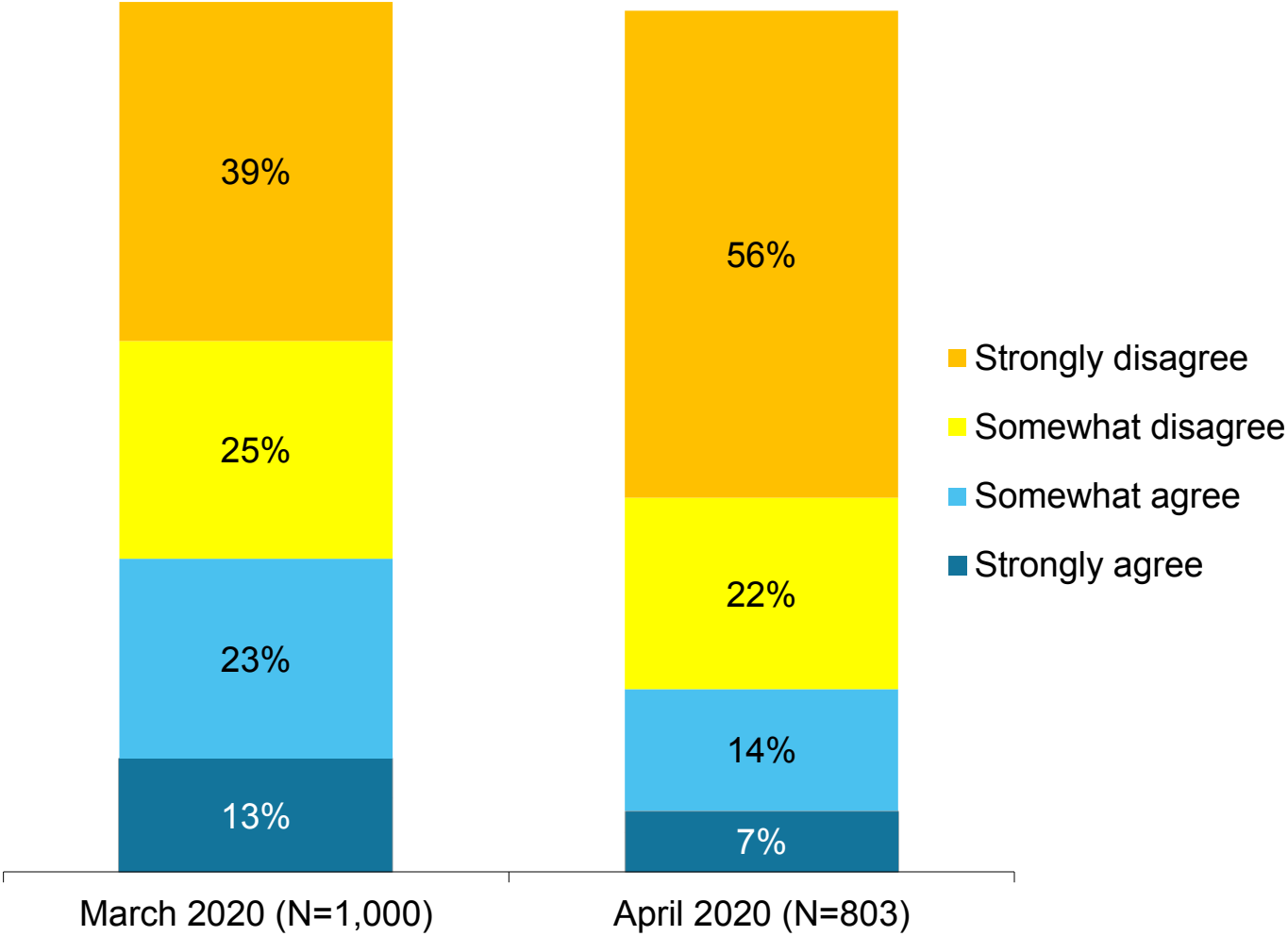
% who strongly/somewhat agree the province is prepared



DWINDLING NUMBERS VIEW COVID-19 AS OVERBLOWN

Q1b. “The COVID-19 virus (also known as coronavirus) emerged earlier this year and has spread to several countries. Please read the following statements and indicate if you agree or disagree: This whole issue of the COVID-19 virus is overblown for people living in this country.”

Base: All respondents (N=803)



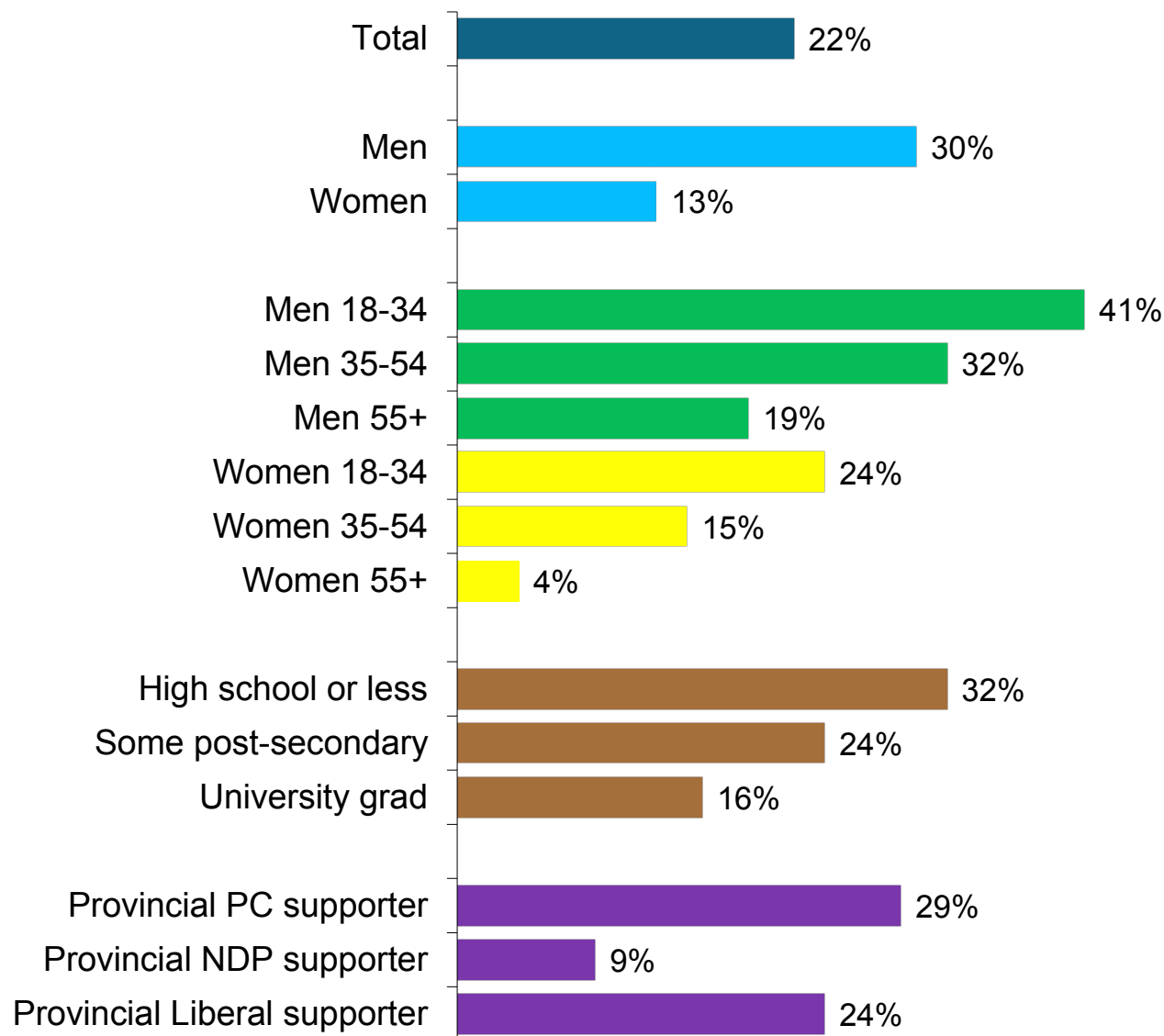
YOUNGER MEN REMAIN SIGNIFICANTLY LESS LIKELY TO TAKE COVID-19 SERIOUSLY

VIEWS AMONG SUB-POPULATIONS

Q1b. "The COVID-19 virus (also known as coronavirus) emerged earlier this year and has spread to several countries. Please read the following statements and indicate if you agree or disagree: This whole issue of the COVID-19 virus is overblown for people living in this country."

Base: All respondents (N=803)

% who strongly/somewhat agree COVID-19 is overblown



1. Please read the following statements about the COVID-19 virus and indicate if you agree or disagree with each one:

			Total	REGION			WINNIPEG REGION					GENDER		AGE		
			(803)	Winnipeg	Rural	NW	NE	SE	SW	Core	Male	Female	18-34	35-54	55+	
I am confident our provincial government is prepared to deal with an outbreak of the COVID-19 virus here in Manitoba.	Base	Weighted base	(803)	(482)	(321)	(88)	(107)	(89)	(127)	(71)	(389)	(410)	(238)	(270)	(295)	
		Sample size	(803)	(523)	(280)	(99)	(114)	(95)	(136)	(79)	(380)	(418)	(267)	(269)	(267)	
	Strongly agree	N	192	111	81	19	26	20	27	19	91	100	62	50	79	
		%	24%	23%	25%	21%	25%	23%	21%	26%	23%	24%	26%	19%	27%	
	Somewhat agree	N	415	236	179	45	55	47	64	26	205	209	121	146	147	
		%	52%	49%	56%	51%	51%	53%	50%	37%	53%	51%	51%	54%	50%	
	Somewhat disagree	N	140	95	45	15	19	13	28	20	66	71	44	53	42	
		%	17%	20%	14%	17%	18%	15%	22%	29%	17%	17%	19%	20%	14%	
	Strongly disagree	N	57	40	17	10	7	9	9	6	26	30	11	20	26	
		%	7%	8%	5%	11%	6%	10%	7%	8%	7%	7%	5%	7%	9%	
This whole issue of the COVID-19 virus is overblown for people living in this country.	Strongly agree	N	60	35	25	12	9	6	5	3	46	14	25	26	9	
		%	7%	7%	8%	13%	8%	7%	4%	4%	12%	4%	11%	10%	3%	
	Somewhat agree	N	113	59	54	16	11	7	14	11	72	41	52	36	24	
		%	14%	12%	17%	18%	10%	8%	11%	16%	19%	10%	22%	13%	8%	
	Somewhat disagree	N	179	100	80	17	19	22	29	13	82	97	62	68	49	
		%	22%	21%	25%	19%	18%	25%	23%	18%	21%	24%	26%	25%	17%	
	Strongly disagree	N	451	289	162	44	69	53	79	44	189	258	98	140	213	
		%	56%	60%	51%	50%	64%	60%	62%	62%	49%	63%	41%	52%	72%	

1. Please read the following statements about the COVID-19 virus and indicate if you agree or disagree with each one:

				MALES				FEMALES			EDUCATION			VOTE INTENTION				
			Total	18-34	35-54	55+	18-34	35-54	55+	HS or less	Some PS	University Graduate	PC	NDP	Liberal	Green	DK	
I am confident our provincial government is prepared to deal with an outbreak of the COVID-19 virus here in Manitoba.	Base	Weighted base	(803)	(119)	(132)	(138)	(117)	(136)	(157)	(120)	(311)	(362)	(281)	(220)	(121)	(40)	(80)	
		Sample size	(803)	(109)	(126)	(145)	(155)	(141)	(122)	(116)	(306)	(371)	(274)	(222)	(124)	(39)	(81)	
	Strongly agree	N	192	34	24	33	28	26	46	38	70	81	89	35	39	3	11	
		%	24%	28%	18%	24%	24%	19%	30%	31%	22%	22%	32%	16%	32%	7%	14%	
	Somewhat agree	N	415	65	70	70	56	76	77	54	170	184	151	106	60	25	42	
		%	52%	54%	53%	51%	48%	56%	49%	45%	55%	51%	54%	48%	50%	64%	53%	
	Somewhat disagree	N	140	16	27	23	27	24	19	18	52	70	32	58	14	7	18	
		%	17%	14%	21%	17%	23%	18%	12%	15%	17%	19%	12%	26%	11%	19%	23%	
	Strongly disagree	N	57	5	10	11	6	10	14	10	19	27	10	21	8	4	8	
		%	7%	4%	8%	8%	5%	7%	9%	8%	6%	7%	3%	10%	7%	10%	10%	
This whole issue of the COVID-19 virus is overblown for people living in this country.	Strongly agree	N	60	19	19	7	6	7	1	11	27	21	29	4	13	2	3	
		%	7%	16%	14%	5%	5%	5%	1%	9%	9%	6%	10%	2%	11%	6%	3%	
	Somewhat agree	N	113	30	24	19	23	13	5	28	48	35	52	15	16	6	10	
		%	14%	25%	18%	14%	19%	9%	3%	23%	15%	10%	19%	7%	13%	16%	13%	
	Somewhat disagree	N	179	28	33	21	34	35	28	26	73	79	75	41	16	9	24	
		%	22%	24%	25%	15%	29%	26%	18%	22%	24%	22%	27%	19%	13%	24%	30%	
	Strongly disagree	N	451	42	57	91	54	81	122	55	163	226	125	159	76	22	43	
		%	56%	35%	43%	66%	46%	60%	78%	46%	52%	62%	45%	73%	63%	55%	53%	

1. Please read the following statements about the COVID-19 virus and indicate if you agree or disagree with each one:

				INCOME			EMPLOYMENT				EMPLOYER		
			Total	<\$50K	\$50K- \$99K	\$100K+	Full time	Part time/ contract/ working student	Retired	Other	Private sector	Public sector	Not-for- profit
I am confident our provincial government is prepared to deal with an outbreak of the COVID-19 virus here in Manitoba.	Base	Weighted base	(803)	(180)	(290)	(245)	(366)	(152)	(202)	(66)	(276)	(190)	(52)
		Sample size	(803)	(182)	(293)	(243)	(381)	(149)	(183)	(73)	(280)	(195)	(55)
	Strongly agree	N	192	41	71	61	82	40	50	17	74	40	7
		%	24%	23%	24%	25%	22%	26%	25%	26%	27%	21%	14%
	Somewhat agree	N	415	91	144	133	191	79	99	36	141	96	33
		%	52%	51%	50%	54%	52%	52%	49%	55%	51%	51%	63%
	Somewhat disagree	N	140	34	60	33	69	25	33	9	46	37	12
		%	17%	19%	21%	14%	19%	17%	17%	14%	16%	20%	23%
	Strongly disagree	N	57	14	15	18	24	7	20	3	15	16	
		%	7%	8%	5%	7%	7%	5%	10%	5%	6%	9%	
This whole issue of the COVID-19 virus is overblown for people living in this country.	Strongly agree	N	60	16	24	17	34	16	5	5	38	9	2
		%	7%	9%	8%	7%	9%	10%	2%	7%	14%	5%	4%
	Somewhat agree	N	113	37	34	29	53	29	15	10	48	26	9
		%	14%	21%	12%	12%	15%	19%	8%	15%	17%	14%	17%
	Somewhat disagree	N	179	39	61	61	87	34	35	20	65	47	10
		%	22%	22%	21%	25%	24%	22%	17%	31%	23%	25%	18%
	Strongly disagree	N	451	88	172	138	192	73	147	31	126	107	31
		%	56%	49%	59%	56%	52%	48%	73%	47%	46%	57%	60%

1. Please read the following statements about the COVID-19 virus and indicate if you agree or disagree with each one:

				INDIGENOUS		BORN IN CANADA		HOME OWNERSHIP		CHILDREN <16	
			Total	Yes	No	Yes	No	Own	Rent	Yes	No
I am confident our provincial government is prepared to deal with an outbreak of the COVID-19 virus here in Manitoba.	Base	Weighted base	(803)	(74)	(704)	(691)	(107)	(590)	(175)	(204)	(592)
		Sample size	(803)	(76)	(702)	(691)	(108)	(580)	(184)	(203)	(593)
	Strongly agree	N	192	17	169	160	29	145	40	51	139
		%	24%	23%	24%	23%	27%	25%	23%	25%	23%
	Somewhat agree	N	415	40	363	352	61	306	87	115	296
		%	52%	54%	52%	51%	57%	52%	50%	56%	50%
	Somewhat disagree	N	140	12	122	127	13	96	36	29	109
		%	17%	16%	17%	18%	12%	16%	21%	14%	18%
	Strongly disagree	N	57	5	50	52	5	44	12	9	48
		%	7%	7%	7%	7%	5%	7%	7%	4%	8%
This whole issue of the COVID-19 virus is overblown for people living in this country.	Strongly agree	N	60	9	49	43	17	44	13	27	30
		%	7%	13%	7%	6%	16%	8%	8%	13%	5%
	Somewhat agree	N	113	12	91	90	20	68	39	40	72
		%	14%	16%	13%	13%	19%	12%	22%	20%	12%
	Somewhat disagree	N	179	12	163	158	22	129	38	51	129
		%	22%	17%	23%	23%	20%	22%	21%	25%	22%
	Strongly disagree	N	451	40	401	400	49	349	86	86	361
		%	56%	55%	57%	58%	46%	59%	49%	42%	61%

SUMMARY

1. Please read the following statements about the COVID-19 virus and indicate if you agree or disagree with each one:

			Total	REGION			WINNIPEG REGION					GENDER		AGE		
				Winnipeg	Rural	NW	NE	SE	SW	Core	Male	Female	18-34	35-54	55+	
I am confident our provincial government is prepared to deal with an outbreak of the COVID-19 virus here in Manitoba.	Base	Weighted base	(803)	(482)	(321)	(88)	(107)	(89)	(127)	(71)	(389)	(410)	(238)	(270)	(295)	
		Sample size	(803)	(523)	(280)	(99)	(114)	(95)	(136)	(79)	(380)	(418)	(267)	(269)	(267)	
	Agree (1,2)	N	606	347	259	64	81	67	90	45	296	309	183	197	227	
		%	75%	72%	81%	72%	76%	75%	71%	63%	76%	75%	77%	73%	77%	
	Disagree (3,4)	N	197	135	62	25	26	22	36	26	93	101	55	73	68	
		%	25%	28%	19%	28%	24%	25%	29%	37%	24%	25%	23%	27%	23%	
This whole issue of the COVID-19 virus is overblown for people living in this country.	Agree (1,2)	N	173	94	79	28	19	14	18	15	118	55	78	62	33	
		%	22%	19%	25%	31%	18%	16%	14%	20%	30%	13%	33%	23%	11%	
	Disagree (3,4)	N	630	388	242	61	87	75	109	56	271	355	160	208	262	
		%	78%	81%	75%	69%	82%	84%	86%	80%	70%	87%	67%	77%	89%	

SUMMARY

1. Please read the following statements about the COVID-19 virus and indicate if you agree or disagree with each one:

			Total	MALES				FEMALES			EDUCATION			VOTE INTENTION				
				18-34	35-54	55+	18-34	35-54	55+	HS or less	Some PS	University Graduate	PC	NDP	Liberal	Green	DK	
I am confident our provincial government is prepared to deal with an outbreak of the COVID-19 virus here in Manitoba.	Base	Weighted base	(803)	(119)	(132)	(138)	(117)	(136)	(157)	(120)	(311)	(362)	(281)	(220)	(121)	(40)	(80)	
		Sample size	(803)	(109)	(126)	(145)	(155)	(141)	(122)	(116)	(306)	(371)	(274)	(222)	(124)	(39)	(81)	
	Agree (1,2)	N	606	98	95	103	83	102	124	92	240	265	239	140	99	28	54	
		%	75%	83%	72%	75%	72%	75%	79%	76%	77%	73%	85%	64%	82%	71%	67%	
	Disagree (3,4)	N	197	21	37	35	33	34	33	28	71	96	42	79	22	12	26	
		%	25%	17%	28%	25%	28%	25%	21%	24%	23%	27%	15%	36%	18%	29%	33%	
This whole issue of the COVID-19 virus is overblown for people living in this country.	Agree (1,2)	N	173	49	42	26	29	20	6	39	75	57	81	19	29	9	13	
		%	22%	41%	32%	19%	24%	15%	4%	32%	24%	16%	29%	9%	24%	22%	17%	
	Disagree (3,4)	N	630	70	90	112	88	116	151	81	236	305	200	201	92	31	67	
		%	78%	59%	68%	81%	76%	85%	96%	68%	76%	84%	71%	91%	76%	78%	83%	

SUMMARY

1. Please read the following statements about the COVID-19 virus and indicate if you agree or disagree with each one:

			INCOME				EMPLOYMENT				EMPLOYER		
			Total	<\$50K	\$50K-\$99K	\$100K+	Full time	Part time/ contract/ working student	Retired	Other	Private sector	Public sector	Not-for- profit
I am confident our provincial government is prepared to deal with an outbreak of the COVID-19 virus here in Manitoba.	Base	Weighted base	(803)	(180)	(290)	(245)	(366)	(152)	(202)	(66)	(276)	(190)	(52)
		Sample size	(803)	(182)	(293)	(243)	(381)	(149)	(183)	(73)	(280)	(195)	(55)
	Agree (1,2)	N	606	133	215	194	272	119	149	53	216	136	40
		%	75%	74%	74%	79%	74%	79%	74%	81%	78%	72%	77%
	Disagree (3,4)	N	197	47	75	51	94	32	53	13	61	54	12
This whole issue of the COVID-19 virus is overblown for people living in this country.		%	25%	26%	26%	21%	26%	21%	26%	19%	22%	28%	23%
	Agree (1,2)	N	173	53	58	46	87	45	20	15	86	36	11
		%	22%	30%	20%	19%	24%	30%	10%	23%	31%	19%	21%
	Disagree (3,4)	N	630	127	232	199	279	107	182	51	191	154	41
		%	78%	70%	80%	81%	76%	70%	90%	77%	69%	81%	79%

SUMMARY

1. Please read the following statements about the COVID-19 virus and indicate if you agree or disagree with each one:

			Total	INDIGENOUS		BORN IN CANADA		HOME OWNERSHIP		CHILDREN <16	
				Yes	No	Yes	No	Own	Rent	Yes	No
I am confident our provincial government is prepared to deal with an outbreak of the COVID-19 virus here in Manitoba.	Base	Weighted base	(803)	(74)	(704)	(691)	(107)	(590)	(175)	(204)	(592)
		Sample size	(803)	(76)	(702)	(691)	(108)	(580)	(184)	(203)	(593)
	Agree (1,2)	N	606	57	532	512	90	450	127	166	435
		%	75%	77%	76%	74%	83%	76%	73%	81%	73%
	Disagree (3,4)	N	197	17	171	179	18	140	48	38	157
		%	25%	23%	24%	26%	17%	24%	27%	19%	27%
This whole issue of the COVID-19 virus is overblown for people living in this country.	Agree (1,2)	N	173	21	140	133	37	112	52	67	102
		%	22%	29%	20%	19%	34%	19%	30%	33%	17%
	Disagree (3,4)	N	630	53	564	558	71	478	123	136	490
		%	78%	71%	80%	81%	66%	81%	70%	67%	83%

DEMOGRAPHICS
Manitoba Region
Winnipeg Region
Gender
Age

			Total	REGION		WINNIPEG REGION					GENDER		AGE		
Region				Winnipeg	Rural	NW	NE	SE	SW	Core	Male	Female	18-34	35-54	55+
Region	Base	Weighted base	(803)	(482)	(321)	(88)	(107)	(89)	(127)	(71)	(389)	(410)	(238)	(270)	(295)
		Sample size	(803)	(523)	(280)	(99)	(114)	(95)	(136)	(79)	(380)	(418)	(267)	(269)	(267)
	City of Winnipeg	N	482	482		88	107	89	127	71	230	248	147	163	172
		%	60%	100%		100%	100%	100%	100%	100%	59%	60%	62%	60%	58%
	Within Manitoba, but outside of Winnipeg	N	321		321						159	162	91	107	123
		%	40%		100%						41%	40%	38%	40%	42%
WINNIPEG REGION	Base: Winnipeg	Base	(482)	(482)		(88)	(107)	(89)	(127)	(71)	(230)	(248)	(147)	(163)	(172)
	Northwest	N	88	88		88					41	47	29	37	23
		%	18%	18%		100%					18%	19%	19%	23%	13%
	Northeast	N	107	107			107				57	49	28	36	43
		%	22%	22%			100%				25%	20%	19%	22%	25%
	Southeast	N	89	89				89			43	46	22	27	40
		%	18%	18%				100%			19%	19%	15%	17%	23%
	Southwest	N	127	127					127		60	67	39	38	49
		%	26%	26%					100%		26%	27%	27%	23%	29%
	Core area	N	71	71						71	30	38	29	25	17
		%	15%	15%						100%	13%	15%	20%	15%	10%
Gender	Base	Base	(803)	(482)	(321)	(88)	(107)	(89)	(127)	(71)	(389)	(410)	(238)	(270)	(295)
	Male	N	389	230	159	41	57	43	60	30	389		119	132	138
		%	48%	48%	50%	47%	53%	48%	47%	42%	100%		50%	49%	47%
	Female	N	410	248	162	47	49	46	67	38		410	117	136	157
		%	51%	51%	50%	53%	46%	52%	53%	53%		100%	49%	50%	53%
	Other	N	4	4			1			3			2	2	
		%	1%	1%			1%			5%			1%	1%	
Age	Base	Base	(803)	(482)	(321)	(88)	(107)	(89)	(127)	(71)	(389)	(410)	(238)	(270)	(295)
	18-34 years	N	238	147	91	29	28	22	39	29	119	117	238		
		%	30%	30%	28%	32%	26%	24%	31%	42%	31%	28%	100%		
	35-54 years	N	270	163	107	37	36	27	38	25	132	136		270	
		%	34%	34%	33%	42%	34%	30%	30%	35%	34%	33%		100%	
	55+ years	N	295	172	123	23	43	40	49	17	138	157			295
		%	37%	36%	38%	26%	40%	45%	39%	24%	35%	38%			100%

DEMOGRAPHICS
Manitoba Region
Winnipeg Region
Gender
Age

			Total	MALES			FEMALES			EDUCATION			VOTE INTENTION				
				18-34	35-54	55+	18-34	35-54	55+	HS or less	Some PS	University Graduate	PC	NDP	Liberal	Green	DK
Region	Base	Weighted base Sample size	(803) (803)	(119) (109)	(132) (126)	(138) (145)	(117) (155)	(136) (141)	(157) (122)	(120) (116)	(311) (306)	(362) (371)	(281) (274)	(220) (222)	(121) (124)	(40) (39)	(80) (81)
	City of Winnipeg	N	482	73	79	78	72	82	94	63	172	241	144	143	84	24	47
		%	60%	61%	60%	57%	61%	60%	60%	53%	55%	67%	51%	65%	70%	60%	59%
	Within Manitoba, but outside of Winnipeg	N	321	46	53	60	45	54	63	57	139	121	137	77	37	16	33
		%	40%	39%	40%	43%	39%	40%	40%	47%	45%	33%	49%	35%	30%	40%	41%
WINNIPEG REGION	Base: Winnipeg	Base	(482)	(73)	(79)	(78)	(72)	(82)	(94)	(63)	(172)	(241)	(144)	(143)	(84)	(24)	(47)
	Northwest	N	88	14	15	13	15	22	10	10	35	41	31	20	13	8	7
		%	18%	19%	19%	16%	21%	27%	11%	16%	20%	17%	22%	14%	15%	33%	15%
	Northeast	N	107	15	21	21	12	15	22	22	37	47	30	40	12	4	12
		%	22%	21%	27%	26%	17%	19%	23%	35%	21%	20%	21%	28%	14%	19%	25%
	Southeast	N	89	12	11	20	10	16	21	6	31	50	36	20	19	2	8
		%	18%	16%	14%	25%	14%	20%	22%	9%	18%	21%	25%	14%	22%	9%	18%
	Southwest	N	127	18	22	20	22	16	30	12	44	71	35	31	32	4	9
		%	26%	24%	28%	25%	30%	20%	32%	19%	25%	30%	24%	22%	38%	18%	20%
	Core area	N	71	14	10	5	13	13	12	14	25	31	12	31	9	5	11
		%	15%	20%	13%	7%	19%	15%	12%	22%	15%	13%	8%	22%	10%	21%	23%
	Gender	Base	Base	(803)	(119)	(132)	(138)	(117)	(136)	(157)	(120)	(311)	(362)	(281)	(220)	(121)	(40)
Male		N	389	119	132	138				64	145	175	166	90	51	17	31
		%	48%	100%	100%	100%				53%	47%	48%	59%	41%	42%	42%	39%
Female		N	410				117	136	157	57	165	184	115	125	70	23	49
		%	51%				100%	100%	100%	47%	53%	51%	41%	57%	58%	58%	61%
Other		N	4								1	3		4			
	%	1%								0%	1%		2%				
Age	Base	Base	(803)	(119)	(132)	(138)	(117)	(136)	(157)	(120)	(311)	(362)	(281)	(220)	(121)	(40)	(80)
	18-34 years	N	238	119			117			53	87	94	62	72	44	11	20
		%	30%	100%			100%			44%	28%	26%	22%	33%	36%	28%	25%
	35-54 years	N	270		132			136		28	106	136	89	78	35	17	31
		%	34%		100%			100%		24%	34%	37%	32%	36%	29%	42%	39%
	55+ years	N	295			138			157	38	118	132	131	69	42	12	29
		%	37%			100%			100%	32%	38%	37%	46%	32%	34%	30%	36%

DEMOGRAPHICS
Manitoba Region
Winnipeg Region
Gender
Age

				INCOME			EMPLOYMENT				EMPLOYER		
			Total	<\$50K	\$50K- \$99K	\$100K+	Full time	Part time/ contract/ working student	Retired	Other	Private sector	Public sector	Not-for- profit
Region	Base	Weighted base	(803)	(180)	(290)	(245)	(366)	(152)	(202)	(66)	(276)	(190)	(52)
		Sample size	(803)	(182)	(293)	(243)	(381)	(149)	(183)	(73)	(280)	(195)	(55)
	City of Winnipeg	N	482	106	170	151	229	84	118	42	160	118	34
		%	60%	59%	59%	62%	63%	55%	59%	64%	58%	62%	67%
	Within Manitoba, but outside of Winnipeg	N	321	74	120	94	137	68	83	24	116	71	17
		%	40%	41%	41%	38%	37%	45%	41%	36%	42%	38%	33%
WINNIPEG REGION	Base: Winnipeg	Base	(482)	(106)	(170)	(151)	(229)	(84)	(118)	(42)	(160)	(118)	(34)
	Northwest	N	88	21	31	27	47	17	15	7	32	23	9
		%	18%	20%	18%	18%	20%	20%	12%	16%	20%	20%	25%
	Northeast	N	107	23	44	28	46	18	34	6	36	22	6
		%	22%	22%	26%	19%	20%	21%	29%	15%	22%	19%	17%
	Southeast	N	89	9	33	37	46	13	23	6	32	22	5
		%	18%	8%	19%	24%	20%	16%	20%	15%	20%	19%	14%
	Southwest	N	127	26	42	44	56	21	37	13	36	36	6
		%	26%	25%	25%	29%	24%	25%	31%	30%	22%	30%	16%
	Core area	N	71	27	20	16	34	15	9	10	24	15	9
		%	15%	26%	12%	10%	15%	18%	8%	24%	15%	13%	28%
Gender	Base	Base	(803)	(180)	(290)	(245)	(366)	(152)	(202)	(66)	(276)	(190)	(52)
	Male	N	389	81	144	130	178	79	99	21	161	80	17
		%	48%	45%	50%	53%	49%	52%	49%	31%	58%	42%	32%
	Female	N	410	98	145	115	188	70	103	44	114	109	35
		%	51%	54%	50%	47%	51%	46%	51%	66%	41%	58%	68%
	Other	N	4	2	2		1	2		2	2	1	
%		1%	1%	1%		0%	1%		2%	1%	0%		
Age	Base	Base	(803)	(180)	(290)	(245)	(366)	(152)	(202)	(66)	(276)	(190)	(52)
	18-34 years	N	238	73	80	61	124	60		47	112	58	15
		%	30%	40%	27%	25%	34%	40%		71%	40%	30%	28%
	35-54 years	N	270	45	94	111	201	40	6	15	109	103	28
		%	34%	25%	33%	45%	55%	26%	3%	23%	40%	55%	55%
	55+ years	N	295	63	116	73	41	52	195	4	55	29	9
		%	37%	35%	40%	30%	11%	34%	97%	6%	20%	15%	17%

DEMOGRAPHICS
Manitoba Region
Winnipeg Region
Gender
Age

			Total	INDIGENOUS		BORN IN CANADA		HOME OWNERSHIP		CHILDREN <16	
				Yes	No	Yes	No	Own	Rent	Yes	No
Region	Base	Weighted base	(803)	(74)	(704)	(691)	(107)	(590)	(175)	(204)	(592)
		Sample size	(803)	(76)	(702)	(691)	(108)	(580)	(184)	(203)	(593)
	City of Winnipeg	N	482	43	424	410	69	343	118	100	378
		%	60%	59%	60%	59%	65%	58%	67%	49%	64%
	Within Manitoba, but outside of Winnipeg	N	321	30	280	281	38	248	57	104	214
		%	40%	41%	40%	41%	35%	42%	33%	51%	36%
WINNIPEG REGION	Base: Winnipeg	Base	(482)	(43)	(424)	(410)	(69)	(343)	(118)	(100)	(378)
	Northwest	N	88	8	76	78	10	62	22	18	68
		%	18%	18%	18%	19%	14%	18%	19%	17%	18%
	Northeast	N	107	8	97	94	13	82	22	25	81
		%	22%	18%	23%	23%	18%	24%	19%	25%	21%
	Southeast	N	89	8	79	72	17	70	16	24	65
		%	18%	18%	19%	17%	25%	20%	14%	24%	17%
	Southwest	N	127	10	113	107	19	91	28	22	104
		%	26%	22%	27%	26%	27%	26%	24%	22%	27%
	Core area	N	71	10	59	59	11	38	29	11	60
		%	15%	23%	14%	14%	16%	11%	25%	11%	16%
Gender	Base	Base	(803)	(74)	(704)	(691)	(107)	(590)	(175)	(204)	(592)
	Male	N	389	37	339	325	60	282	88	108	277
		%	48%	51%	48%	47%	56%	48%	50%	53%	47%
	Female	N	410	36	361	362	48	306	86	95	311
		%	51%	49%	51%	52%	44%	52%	49%	47%	53%
	Other	N	4		4	4		2	2		4
		%	1%		1%	1%		0%	1%		1%
Age	Base	Base	(803)	(74)	(704)	(691)	(107)	(590)	(175)	(204)	(592)
	18-34 years	N	238	27	198	186	49	113	100	81	155
		%	30%	36%	28%	27%	45%	19%	57%	40%	26%
	35-54 years	N	270	27	237	240	29	221	42	119	148
		%	34%	37%	34%	35%	27%	37%	24%	59%	25%
	55+ years	N	295	20	269	264	30	256	34	3	290
		%	37%	27%	38%	38%	28%	43%	19%	2%	49%

DEMOGRAPHICS: BANNERS

Voting intentions

Education

Children < 16 in home

Home ownership

Indigenous

Born in Canada

Income

			Total	REGION		WINNIPEG REGION					GENDER		AGE		
VOTE INTENTION	Base	Weighted base	(741)	(442)	(300)	(79)	(98)	(86)	(111)	(67)	(356)	(381)	(208)	(251)	(283)
		Sample size	(740)	(477)	(263)	(88)	(104)	(92)	(118)	(75)	(348)	(387)	(234)	(250)	(256)
	PC	N	281	144	137	31	30	36	35	12	166	115	62	89	131
		%	38%	33%	46%	40%	30%	42%	31%	17%	47%	30%	30%	35%	46%
	NDP	N	220	143	77	20	40	20	31	31	90	125	72	78	69
		%	30%	32%	26%	25%	41%	24%	28%	46%	25%	33%	35%	31%	25%
	Liberal	N	121	84	37	13	12	19	32	9	51	70	44	35	42
		%	16%	19%	12%	16%	12%	22%	28%	13%	14%	18%	21%	14%	15%
	Green	N	40	24	16	8	4	2	4	5	17	23	11	17	12
		%	5%	5%	5%	10%	4%	2%	4%	8%	5%	6%	5%	7%	4%
	DK	N	80	47	33	7	12	8	9	11	31	49	20	31	29
		%	11%	11%	11%	9%	12%	10%	8%	16%	9%	13%	10%	13%	10%
EDUCATION	Base	Base	(793)	(477)	(316)	(87)	(106)	(87)	(127)	(70)	(384)	(405)	(235)	(270)	(288)
	HS or less	N	120	63	57	10	22	6	12	14	64	57	53	28	38
		%	15%	13%	18%	11%	21%	7%	9%	19%	17%	14%	23%	11%	13%
	Some PS	N	311	172	139	35	37	31	44	25	145	165	87	106	118
		%	39%	36%	44%	41%	35%	36%	35%	36%	38%	41%	37%	39%	41%
	University Graduate	N	362	241	121	41	47	50	71	31	175	184	94	136	132
%		46%	51%	38%	48%	45%	57%	56%	45%	46%	45%	40%	50%	46%	
CHILDREN <16	Base	Base	(796)	(478)	(317)	(86)	(107)	(89)	(126)	(71)	(385)	(406)	(236)	(267)	(293)
	Yes	N	204	100	104	18	25	24	22	11	108	95	81	119	3
		%	26%	21%	33%	20%	24%	27%	18%	16%	28%	23%	34%	45%	1%
	No	N	592	378	214	68	81	65	104	60	277	311	155	148	290
%		74%	79%	67%	80%	76%	73%	82%	84%	72%	77%	66%	55%	99%	
HOME OWNERSHIP	Base	Base	(765)	(460)	(305)	(84)	(104)	(86)	(119)	(68)	(369)	(392)	(213)	(263)	(289)
	Own	N	590	343	248	62	82	70	91	38	282	306	113	221	256
		%	77%	74%	81%	74%	79%	81%	76%	56%	76%	78%	53%	84%	88%
	Rent	N	175	118	57	22	22	16	28	29	88	86	100	42	34
%		23%	26%	19%	26%	21%	19%	24%	44%	24%	22%	47%	16%	12%	
INDIGENOUS	Base	Base	(777)	(467)	(310)	(84)	(105)	(86)	(122)	(69)	(376)	(397)	(225)	(264)	(288)
	Yes	N	74	43	30	8	8	8	10	10	37	36	27	27	20
		%	9%	9%	10%	9%	8%	9%	8%	15%	10%	9%	12%	10%	7%
	No	N	704	424	280	76	97	79	113	59	339	361	198	237	269
%		91%	91%	90%	91%	92%	91%	92%	85%	90%	91%	88%	90%	93%	
BORN IN CANADA	Base	Base	(798)	(479)	(319)	(88)	(107)	(89)	(126)	(70)	(384)	(410)	(235)	(269)	(294)
	Yes	N	691	410	281	78	94	72	107	59	325	362	186	240	264
		%	87%	86%	88%	89%	88%	81%	85%	85%	84%	88%	79%	89%	90%
	No	N	107	69	38	10	13	17	19	11	60	48	49	29	30
%		13%	14%	12%	11%	12%	19%	15%	15%	16%	12%	21%	11%	10%	
INCOME	Base	Base	(715)	(427)	(288)	(79)	(94)	(79)	(112)	(63)	(354)	(357)	(213)	(250)	(252)
	<\$50K	N	180	106	74	21	23	9	26	27	81	98	73	45	63
		%	25%	25%	26%	27%	24%	11%	23%	43%	23%	27%	34%	18%	25%
	\$50K- \$99K	N	290	170	120	31	44	33	42	20	144	145	80	94	116
		%	41%	40%	42%	40%	46%	42%	38%	32%	41%	41%	37%	38%	46%
	\$100K+	N	245	151	94	27	28	37	44	16	130	115	61	111	73
%		34%	35%	33%	34%	30%	47%	39%	25%	37%	32%	29%	44%	29%	

DEMOGRAPHICS: BANNERS

Voting intentions

Education

Children < 16 in home

Home ownership

Indigenous

Born in Canada

Income

			Total	MALES			FEMALES			EDUCATION			VOTE INTENTION				
				18-34	35-54	55+	18-34	35-54	55+	HS or less	Some PS	University Graduate	PC	NDP	Liberal	Green	DK
VOTE INTENTION	Base	Weighted base	(741)	(101)	(121)	(133)	(105)	(127)	(149)	(109)	(284)	(341)	(281)	(220)	(121)	(40)	(80)
		Sample size	(740)	(92)	(116)	(140)	(139)	(132)	(116)	(104)	(279)	(351)	(274)	(222)	(124)	(39)	(81)
	PC	N	281	34	60	72	27	28	59	51	115	113	281				
		%	38%	34%	50%	54%	26%	22%	40%	47%	41%	33%	100%				
	NDP	N	220	33	32	26	37	44	44	30	69	118		220			
		%	30%	32%	26%	19%	35%	35%	29%	27%	24%	35%		100%			
	Liberal	N	121	22	15	15	22	21	27	16	42	63			121		
		%	16%	22%	12%	11%	21%	16%	18%	15%	15%	18%			100%		
	Green	N	40	6	4	7	5	13	5	2	19	18				40	
		%	5%	6%	3%	5%	5%	10%	3%	2%	7%	5%				100%	
EDUCATION	Base	N	80	6	10	15	14	21	14	11	39	29					80
		%	11%	6%	8%	11%	13%	17%	9%	10%	14%	9%					100%
	HS or less	N	120	32	17	15	22	12	23	120			51	30	16	2	11
		%	15%	27%	13%	11%	19%	9%	15%	100%			18%	14%	13%	5%	14%
	Some PS	N	311	42	53	51	45	53	67		311		115	69	42	19	39
		%	39%	36%	40%	38%	39%	39%	44%		100%		41%	32%	35%	49%	49%
	University Graduate	N	362	43	63	69	49	72	63			362	113	118	63	18	29
		%	46%	37%	47%	51%	42%	53%	41%			100%	40%	54%	52%	46%	37%
CHILDREN <16	Base	Base	(796)	(117)	(131)	(137)	(117)	(134)	(156)	(120)	(309)	(359)	(280)	(219)	(120)	(39)	(80)
	Yes	N	204	41	65	2	40	54	1	33	72	99	76	53	30	14	15
		%	26%	35%	50%	1%	34%	40%	1%	28%	23%	28%	27%	24%	25%	35%	18%
	No	N	592	76	66	135	77	80	154	87	237	260	204	165	89	25	65
HOME OWNERSHIP		%	74%	65%	50%	99%	66%	60%	99%	72%	77%	72%	73%	76%	75%	65%	82%
	Base	Base	(765)	(106)	(128)	(135)	(105)	(133)	(154)	(112)	(296)	(352)	(276)	(210)	(116)	(33)	(77)
	Own	N	590	52	106	123	59	114	133	69	229	288	241	149	84	27	58
		%	77%	49%	83%	91%	57%	86%	86%	62%	77%	82%	87%	71%	73%	81%	75%
INDIGENOUS	Rent	N	175	54	22	12	45	19	22	42	67	64	35	62	32	6	19
		%	23%	51%	17%	9%	43%	14%	14%	38%	23%	18%	13%	29%	27%	19%	25%
	Base	Base	(777)	(110)	(131)	(135)	(113)	(131)	(153)	(116)	(301)	(355)	(275)	(217)	(117)	(36)	(77)
	Yes	N	74	13	14	11	14	14	9	15	35	23	12	29	14	5	9
BORN IN CANADA		%	9%	12%	10%	8%	12%	10%	6%	13%	12%	7%	4%	13%	12%	13%	12%
	No	N	704	97	117	124	99	117	144	101	266	331	263	188	103	31	68
		%	91%	88%	90%	92%	88%	90%	94%	87%	88%	93%	96%	87%	88%	87%	88%
	Base	Base	(798)	(116)	(131)	(137)	(117)	(136)	(157)	(118)	(310)	(361)	(281)	(220)	(119)	(39)	(80)
INCOME	Yes	N	691	85	119	121	99	120	143	103	276	303	256	193	94	31	70
		%	87%	73%	91%	88%	85%	88%	91%	87%	89%	84%	91%	88%	79%	80%	87%
	No	N	107	32	12	16	17	16	14	15	34	57	25	27	25	8	10
		%	13%	27%	9%	12%	15%	12%	9%	13%	11%	16%	9%	12%	21%	20%	13%
	Base	Base	(715)	(107)	(123)	(124)	(104)	(125)	(127)	(101)	(282)	(326)	(254)	(200)	(111)	(35)	(66)
	<\$50K	N	180	36	21	24	36	23	39	48	80	50	44	51	33	10	18
		%	25%	33%	17%	19%	34%	18%	30%	48%	28%	15%	17%	26%	30%	27%	27%
	\$50K- \$99K	N	290	37	46	61	42	47	55	37	120	129	116	85	31	13	28
		%	41%	34%	38%	49%	40%	38%	43%	37%	43%	39%	46%	43%	28%	37%	43%
	\$100K+	N	245	35	56	40	26	55	33	15	82	148	93	64	47	12	20
		%	34%	32%	45%	32%	25%	44%	26%	15%	29%	45%	37%	32%	42%	35%	30%

DEMOGRAPHICS: BANNERS

Voting intentions

Education

Children < 16 in home

Home ownership

Indigenous

Born in Canada

Income

			Total	INCOME			EMPLOYMENT				EMPLOYER		
				<\$50K	\$50K- \$99K	\$100K+	Full time	Part time/ contract/ working student	Retired	Other	Private sector	Public sector	Not-for- profit
VOTE INTENTION	Base	Weighted base	(741)	(156)	(274)	(236)	(340)	(134)	(196)	(58)	(253)	(176)	(46)
		Sample size	(740)	(157)	(277)	(235)	(355)	(133)	(178)	(63)	(255)	(184)	(49)
	PC	N	281	44	116	93	115	59	84	21	116	41	16
		%	38%	28%	42%	40%	34%	44%	43%	37%	46%	23%	36%
	NDP	N	220	51	85	64	111	30	57	18	53	70	18
		%	30%	33%	31%	27%	33%	22%	29%	31%	21%	40%	39%
	Liberal	N	121	33	31	47	56	24	29	10	45	30	4
		%	16%	21%	11%	20%	16%	18%	15%	17%	18%	17%	10%
	Green	N	40	10	13	12	16	12	8	4	11	13	4
		%	5%	6%	5%	5%	5%	9%	4%	6%	5%	7%	8%
DK	N	80	18	28	20	42	10	19	5	27	22	3	
	%	11%	11%	10%	8%	12%	8%	10%	9%	11%	12%	7%	
EDUCATION	Base	Base	(793)	(178)	(286)	(245)	(366)	(150)	(199)	(63)	(276)	(190)	(50)
	HS or less	N	120	48	37	15	39	22	33	22	43	13	5
		%	15%	27%	13%	6%	11%	15%	16%	34%	16%	7%	9%
	Some PS	N	311	80	120	82	132	75	79	18	137	59	11
		%	39%	45%	42%	33%	36%	50%	40%	29%	50%	31%	21%
	University Graduate	N	362	50	129	148	195	53	87	23	96	117	35
%		46%	28%	45%	60%	53%	35%	44%	37%	35%	62%	70%	
CHILDREN <16	Base	Base	(796)	(178)	(288)	(244)	(364)	(149)	(201)	(66)	(275)	(188)	(49)
	Yes	N	204	27	72	92	135	43	2	23	87	70	20
		%	26%	15%	25%	38%	37%	28%	1%	35%	32%	37%	40%
	No	N	592	152	216	152	229	107	199	43	188	118	30
%		74%	85%	75%	62%	63%	72%	99%	65%	68%	63%	60%	
HOME OWNERSHIP	Base	Base	(765)	(170)	(282)	(237)	(358)	(144)	(200)	(52)	(269)	(184)	(49)
	Own	N	590	81	225	218	285	95	173	33	190	153	37
		%	77%	48%	80%	92%	79%	66%	87%	63%	70%	83%	76%
	Rent	N	175	89	57	19	73	48	27	19	80	31	12
%		23%	52%	20%	8%	21%	34%	13%	37%	30%	17%	24%	
INDIGENOUS	Base	Base	(777)	(173)	(287)	(238)	(358)	(143)	(198)	(63)	(269)	(184)	(48)
	Yes	N	74	26	24	19	35	12	11	9	22	23	2
		%	9%	15%	8%	8%	10%	8%	5%	15%	8%	13%	3%
	No	N	704	146	262	219	323	132	187	54	247	161	46
		%	91%	85%	92%	92%	90%	92%	95%	85%	92%	87%	97%
BORN IN CANADA	Base	Base	(798)	(179)	(290)	(243)	(365)	(149)	(202)	(66)	(272)	(190)	(52)
	Yes	N	691	150	255	212	317	125	183	50	233	165	44
		%	87%	84%	88%	87%	87%	84%	91%	76%	86%	87%	85%
	No	N	107	29	35	31	48	24	19	16	39	25	8
%		13%	16%	12%	13%	13%	16%	9%	24%	14%	13%	15%	
INCOME	Base	Base	(715)	(180)	(290)	(245)	(342)	(137)	(172)	(51)	(253)	(179)	(47)
	<\$50K	N	180	180			53	48	48	25	58	32	10
		%	25%	100%			15%	35%	28%	49%	23%	18%	22%
	\$50K- \$99K	N	290		290		131	46	89	19	101	62	15
		%	41%		100%		38%	34%	52%	37%	40%	34%	31%
	\$100K+	N	245			245	158	43	35	7	94	85	22
%		34%			100%	46%	31%	20%	14%	37%	48%	47%	

Voting intentions
Education
Children < 16 in home
Home ownership
Indigenous
Born in Canada
Income

				INDIGENOUS		BORN IN CANADA		HOME OWNERSHIP		CHILDREN <16		
			Total	Yes	No	Yes	No	Own	Rent	Yes	No	
VOTE INTENTION	Base	Weighted base	(741)	(69)	(654)	(644)	(95)	(559)	(153)	(188)	(549)	
		Sample size	(740)	(70)	(653)	(644)	(94)	(549)	(162)	(189)	(547)	
	PC	N	281	12	263	256	25	241	35	76	204	
		%	38%	17%	40%	40%	26%	43%	23%	40%	37%	
	NDP	N	220	29	188	193	27	149	62	53	161	
		%	30%	42%	29%	30%	28%	27%	40%	28%	30%	
	Liberal	N	121	14	103	94	25	84	32	30	89	
		%	16%	21%	16%	15%	27%	15%	21%	16%	16%	
	Green	N	40	5	31	31	8	27	6	14	25	
		%	5%	7%	5%	5%	8%	5%	4%	7%	5%	
	DK	N	80	9	68	70	10	58	19	15	65	
		%	11%	14%	10%	11%	11%	10%	12%	8%	12%	
	EDUCATION	Base	Base	(793)	(73)	(698)	(682)	(107)	(586)	(173)	(204)	(584)
		HS or less	N	120	15	101	103	15	69	42	33	87
%			15%	20%	14%	15%	14%	12%	24%	16%	15%	
Some PS		N	311	35	266	276	34	229	67	72	237	
		%	39%	48%	38%	40%	32%	39%	38%	35%	41%	
University Graduate		N	362	23	331	303	57	288	64	99	260	
		%	46%	32%	47%	44%	54%	49%	37%	49%	44%	
CHILDREN <16		Base	Base	(796)	(73)	(700)	(687)	(105)	(588)	(173)	(204)	(592)
	Yes	N	204	22	174	170	34	158	36	204		
		%	26%	30%	25%	25%	32%	27%	21%	100%		
	No	N	592	51	527	517	72	430	138		592	
		%	74%	70%	75%	75%	68%	73%	79%		100%	
	HOME OWNERSHIP	Base	Base	(765)	(65)	(681)	(663)	(98)	(590)	(175)	(194)	(567)
Own		N	590	40	537	529	59	590		158	430	
		%	77%	62%	79%	80%	60%	100%		82%	76%	
Rent		N	175	24	144	135	40		175	36	138	
		%	23%	38%	21%	20%	40%		100%	18%	24%	
INDIGENOUS		Base	Base	(777)	(74)	(704)	(675)	(101)	(577)	(169)	(195)	(578)
	Yes	N	74	74		72	2	40	24	22	51	
		%	9%	100%		11%	2%	7%	14%	11%	9%	
	No	N	704		704	603	99	537	144	174	527	
		%	91%		100%	89%	98%	93%	86%	89%	91%	
	BORN IN CANADA	Base	Base	(798)	(74)	(702)	(691)	(107)	(587)	(174)	(204)	(588)
Yes		N	691	72	603	691		529	135	170	517	
		%	87%	98%	86%	100%		90%	77%	83%	88%	
No		N	107	2	99		107	59	40	34	72	
		%	13%	2%	14%		100%	10%	23%	17%	12%	
INCOME		Base	Base	(715)	(70)	(627)	(617)	(95)	(524)	(165)	(191)	(519)
	<\$50K	N	180	26	146	150	29	81	89	27	152	
		%	25%	38%	23%	24%	31%	15%	54%	14%	29%	
	\$50K- \$99K	N	290	24	262	255	35	225	57	72	216	
		%	41%	35%	42%	41%	37%	43%	35%	38%	42%	
	\$100K+	N	245	19	219	212	31	218	19	92	152	
		%	34%	27%	35%	34%	32%	42%	12%	48%	29%	