



COVID-19 NOVEL CORONAVIRUS

*Protecting Manitobans:
December Update*

Manitoba 

COVID-19 NOVEL CORONAVIRUS

Manitoba 



CURRENT STATE

COVID-19 NOVEL CORONAVIRUS

Manitoba 



COVID's impact in Manitoba

17,107

Total Positive Cases

357,707

Total Tested

1,094

Total Hospitalized

204

Total ICU Stays

333

Total Deaths

Information up to November 30, 2020

COVID-19 NOVEL CORONAVIRUS



How COVID-19 Affects Us



48 Cases



3 Hospitalizations

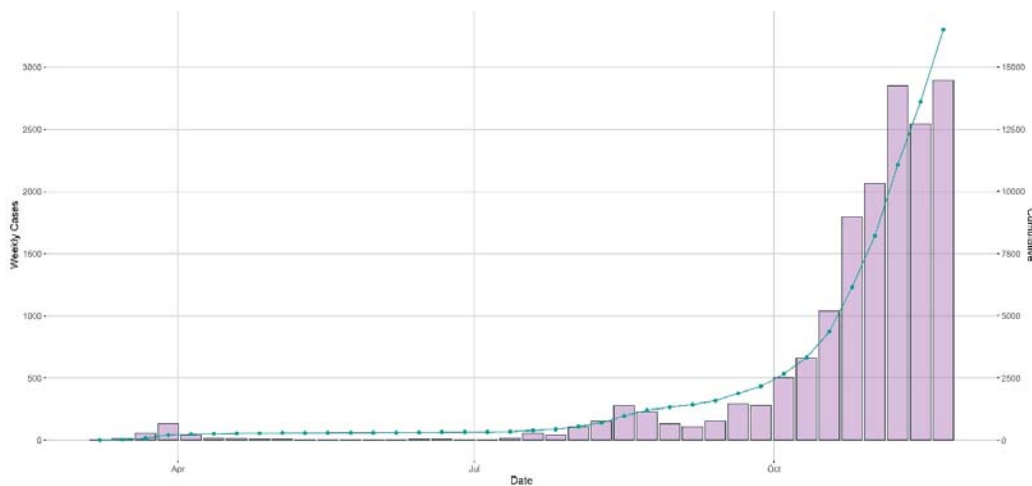


1 Death

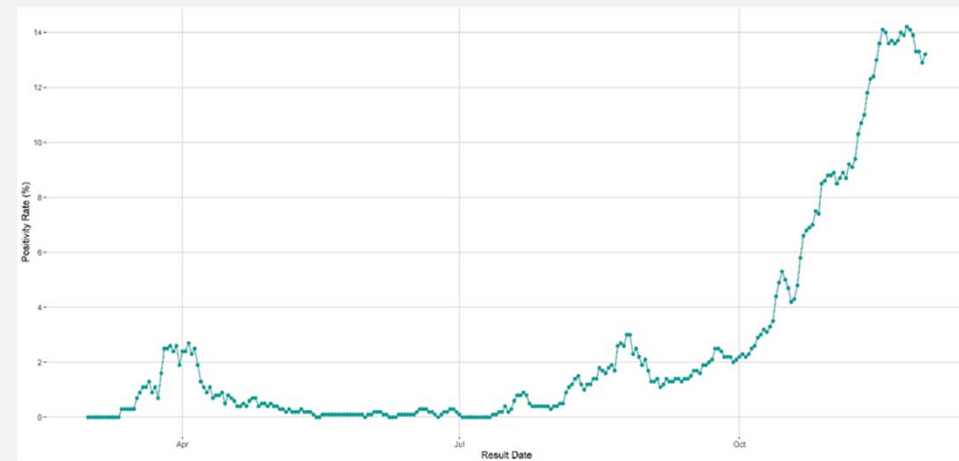
COVID-19 NOVEL CORONAVIRUS



An unsustainable curve



Weekly COVID Cases



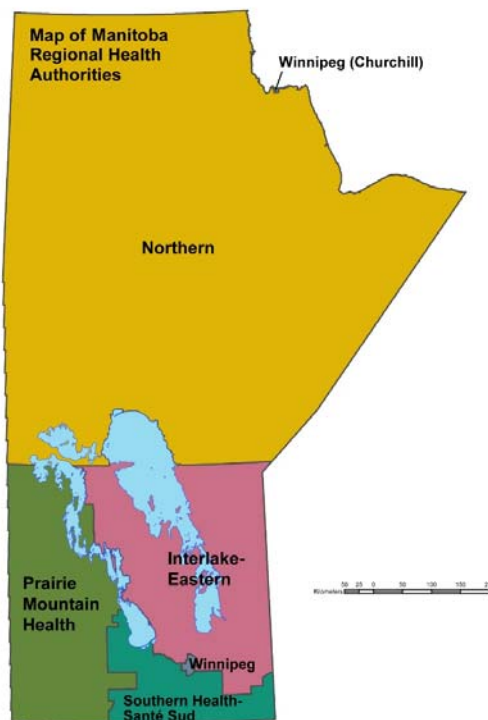
Overall Provincial Positivity Rate

Information up to November 30, 2020

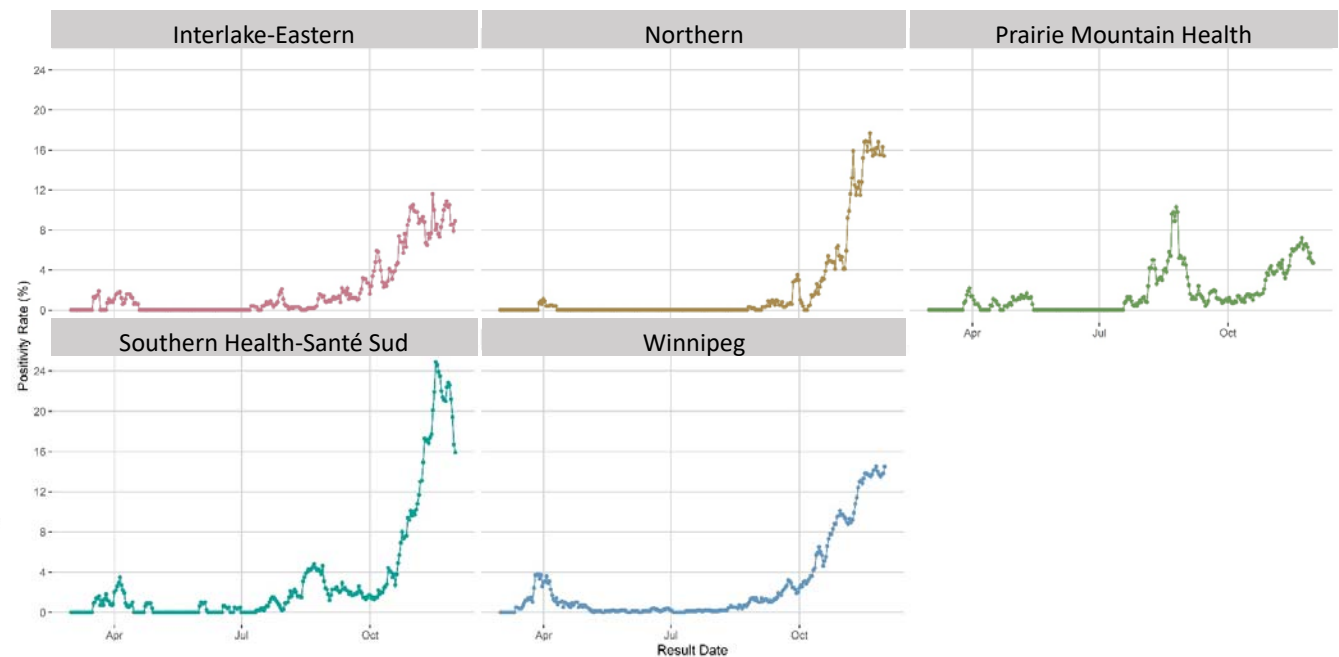
COVID-19 NOVEL CORONAVIRUS



COVID trending too high in all regions



Positivity Rates by Regional Health Authority



Information up to November 30, 2020

COVID-19 NOVEL CORONAVIRUS



A tragic impact on Manitobans of every age

COVID Related Manitoba Deaths by Age



Deaths by age group			
0-9	1	50-59	15
10-19	0	60-69	34
20-29	0	70-79	69
30-39	3	80-89	122
40-49	8	90+	81

Information includes deaths up to November 30, 2020

COVID-19 NOVEL CORONAVIRUS



A significant spike in deaths last month

COVID Related Manitoba Deaths by Month



Information includes deaths up to November 30, 2020

Cases Broken Down by Age Group

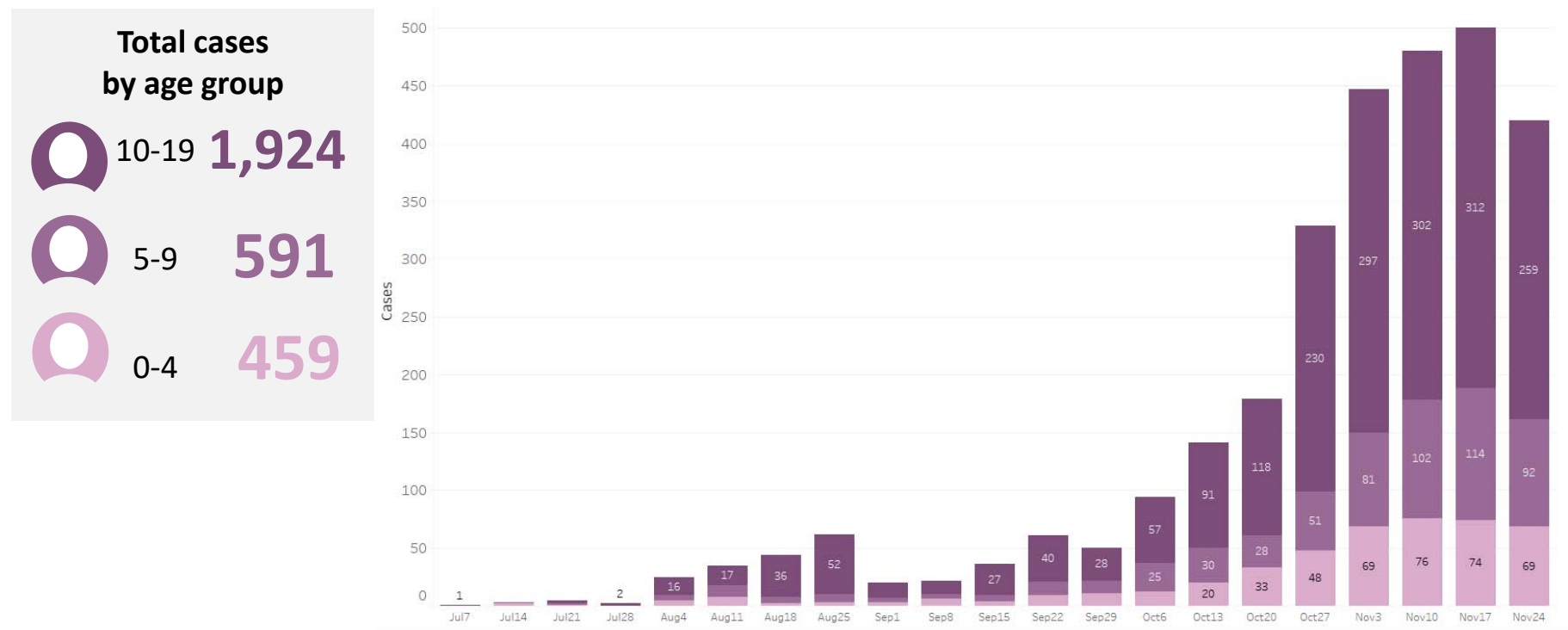


Cases by age group					
0-5	456	30-39	2,703	70-79	906
5-9	591	40-49	2,362	80-89	693
10-19	1,924	50-59	2,296	90+	433
20-29	3,240	60-69	1,503		

COVID-19 NOVEL CORONAVIRUS

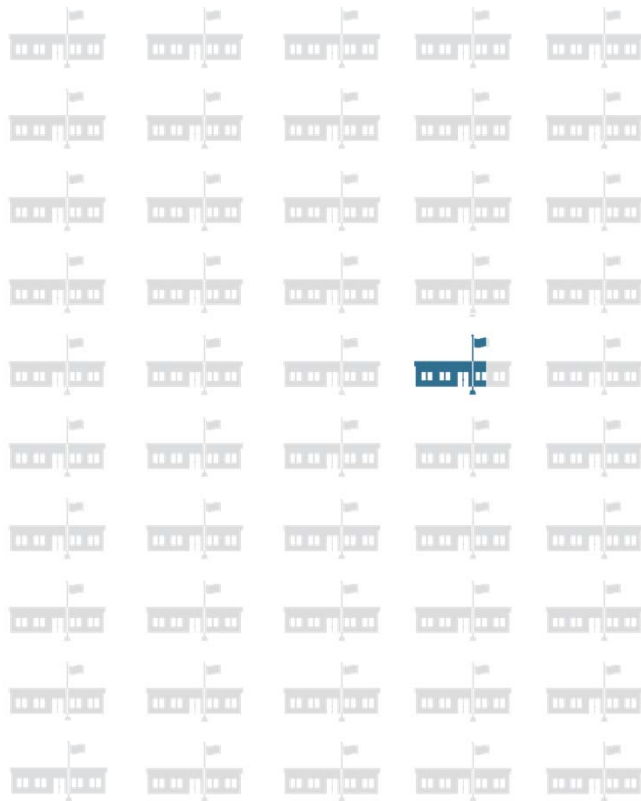


New COVID Cases in Children (Age 0-19)



Epi week information includes cases up to and including the week of Nov. 24-30

COVID-19 NOVEL CORONAVIRUS



No evidence of significant
in-school transmission

6

Schools with Evidence of In-School Transmission

802

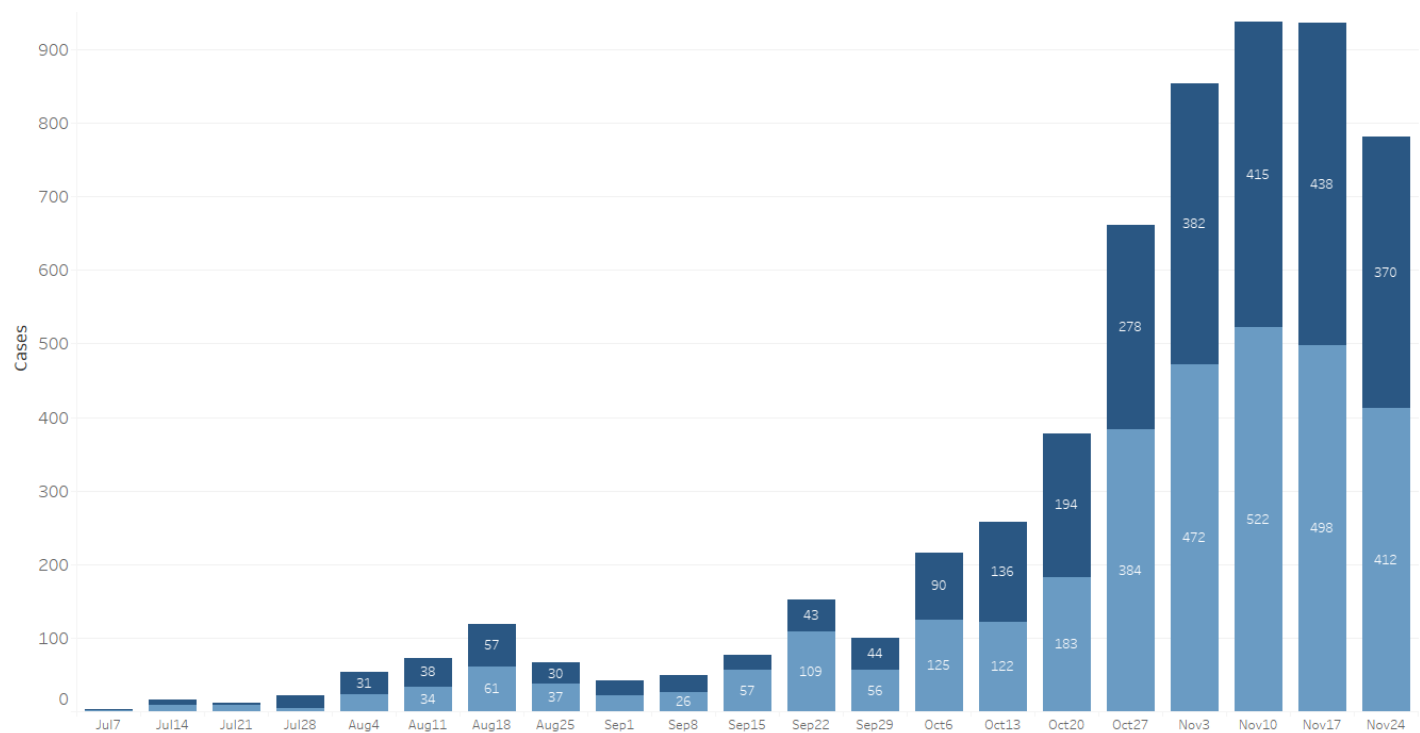
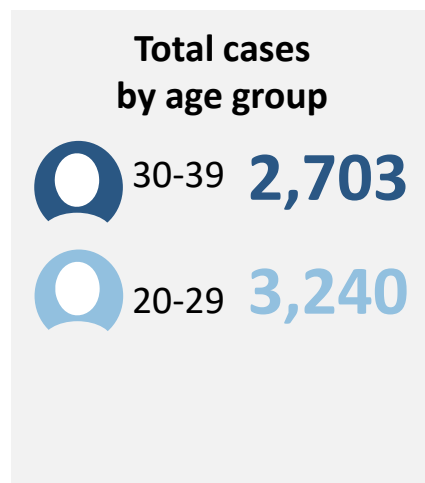
**Total public and
independent schools**

Information includes data up to November 30, 2020

COVID-19 NOVEL CORONAVIRUS



New COVID Cases in Young Adults (Age 20-39)



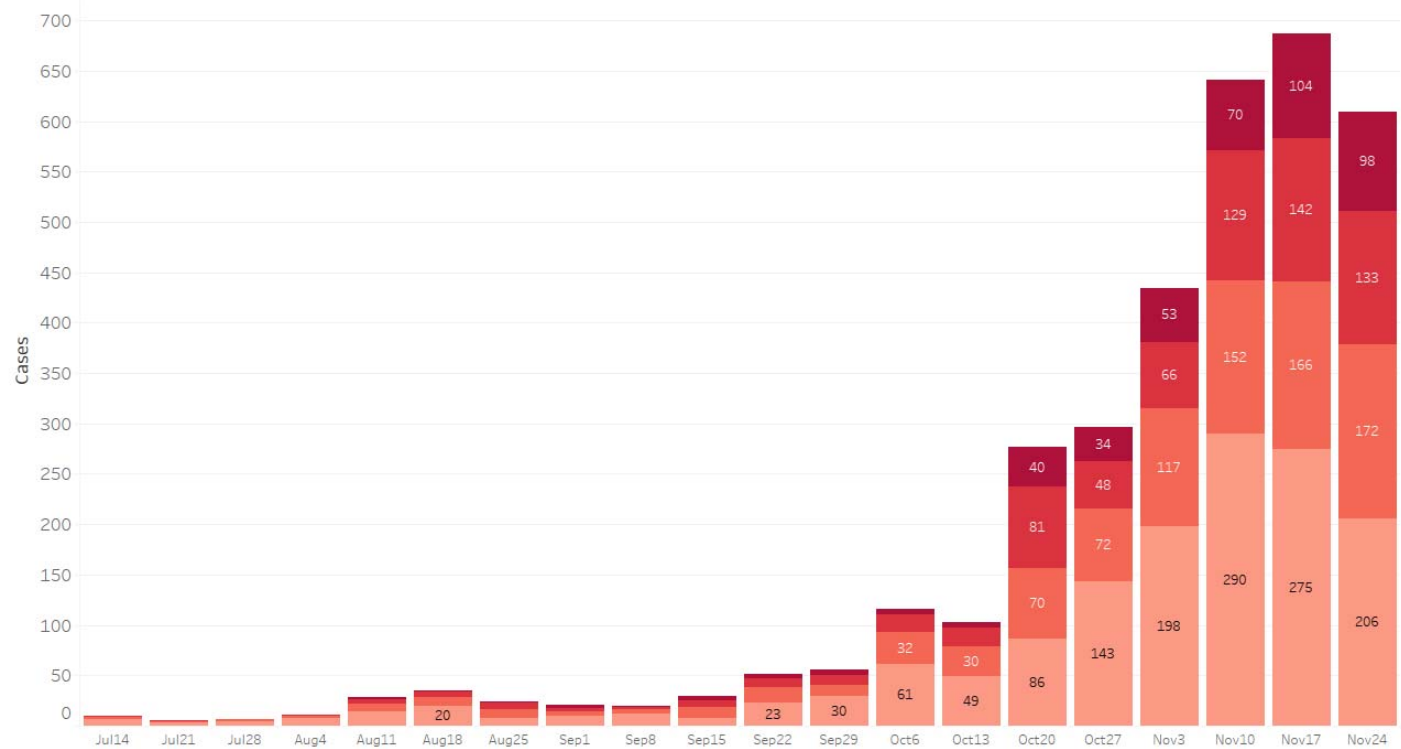
Epi week information includes cases up to and including the week of Nov. 24-30

COVID-19 NOVEL CORONAVIRUS



New COVID Cases in Seniors (60+)

Total cases by age group		
	90+	433
	80-89	693
	70-79	906
	60-69	1,503

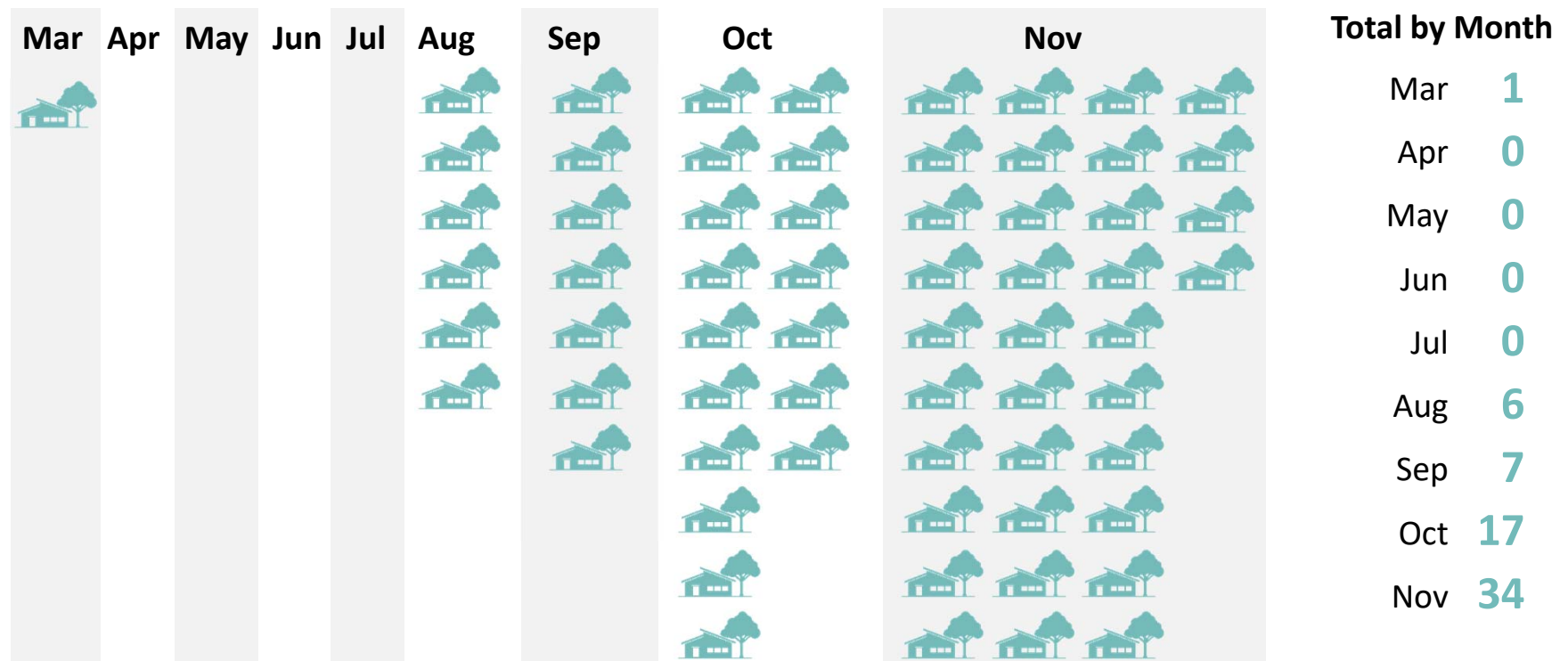


Epi week information includes cases up to and including the week of Nov. 24-30

COVID-19 NOVEL CORONAVIRUS



Outbreaks in Personal Care Homes and Long Term Care



Information includes deaths up to November 30, 2020

COVID-19 NOVEL CORONAVIRUS

Manitoba 

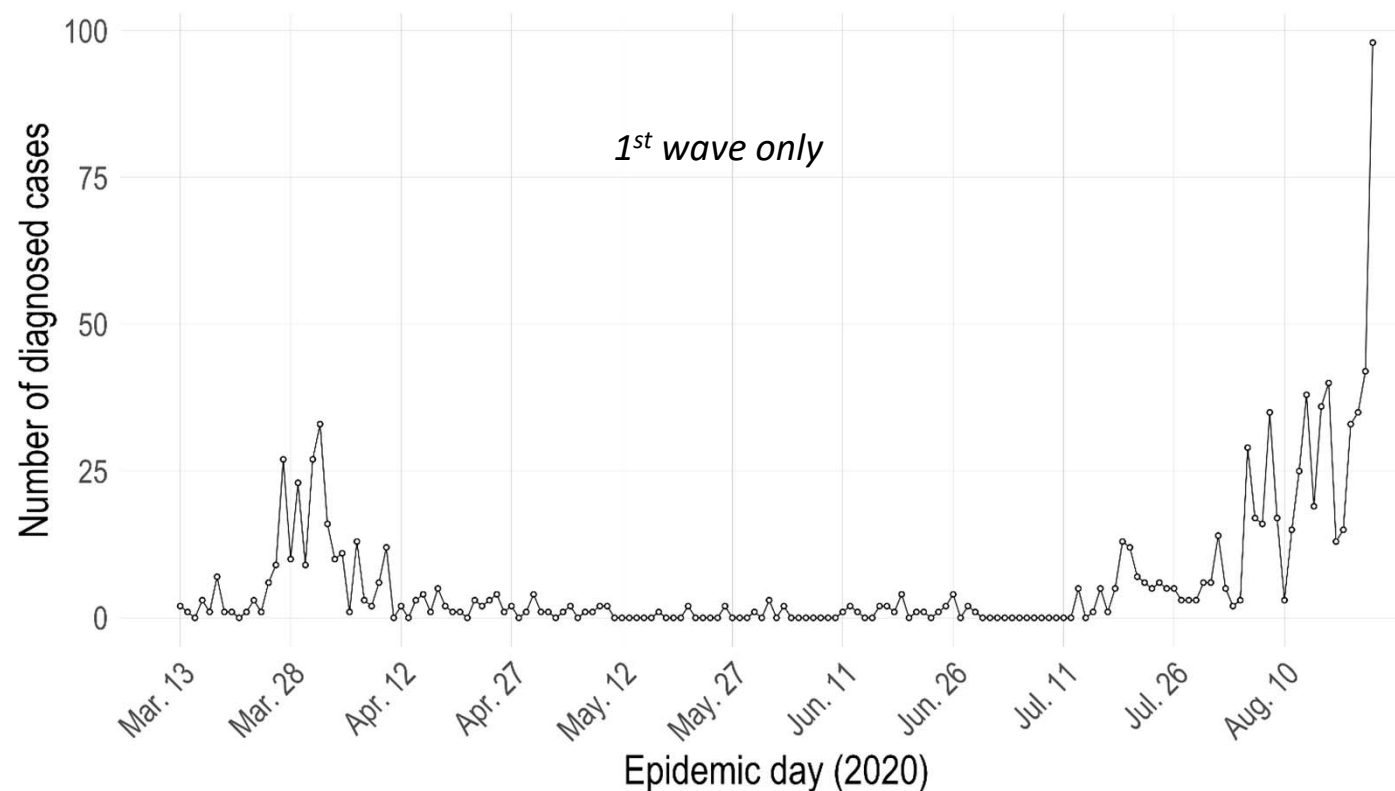


COVID-19 MODELLING

COVID-19 NOVEL CORONAVIRUS



Manitoba's model begins with real Manitoba data



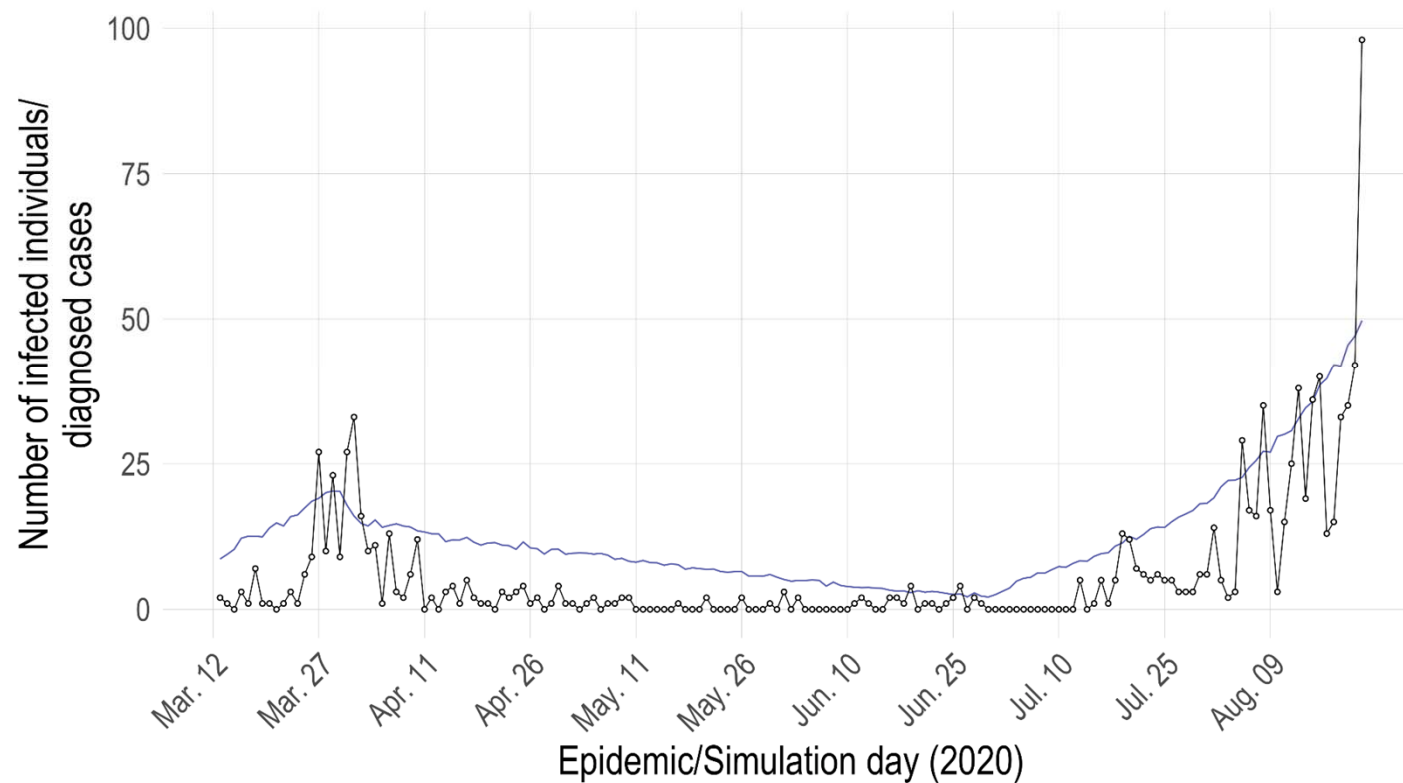
Manitoba Number of Cases

Information from March 13
to November 28, 2020.
Manitoba data extracted:
2020-12-03.

COVID-19 NOVEL CORONAVIRUS



Model then projects total cases



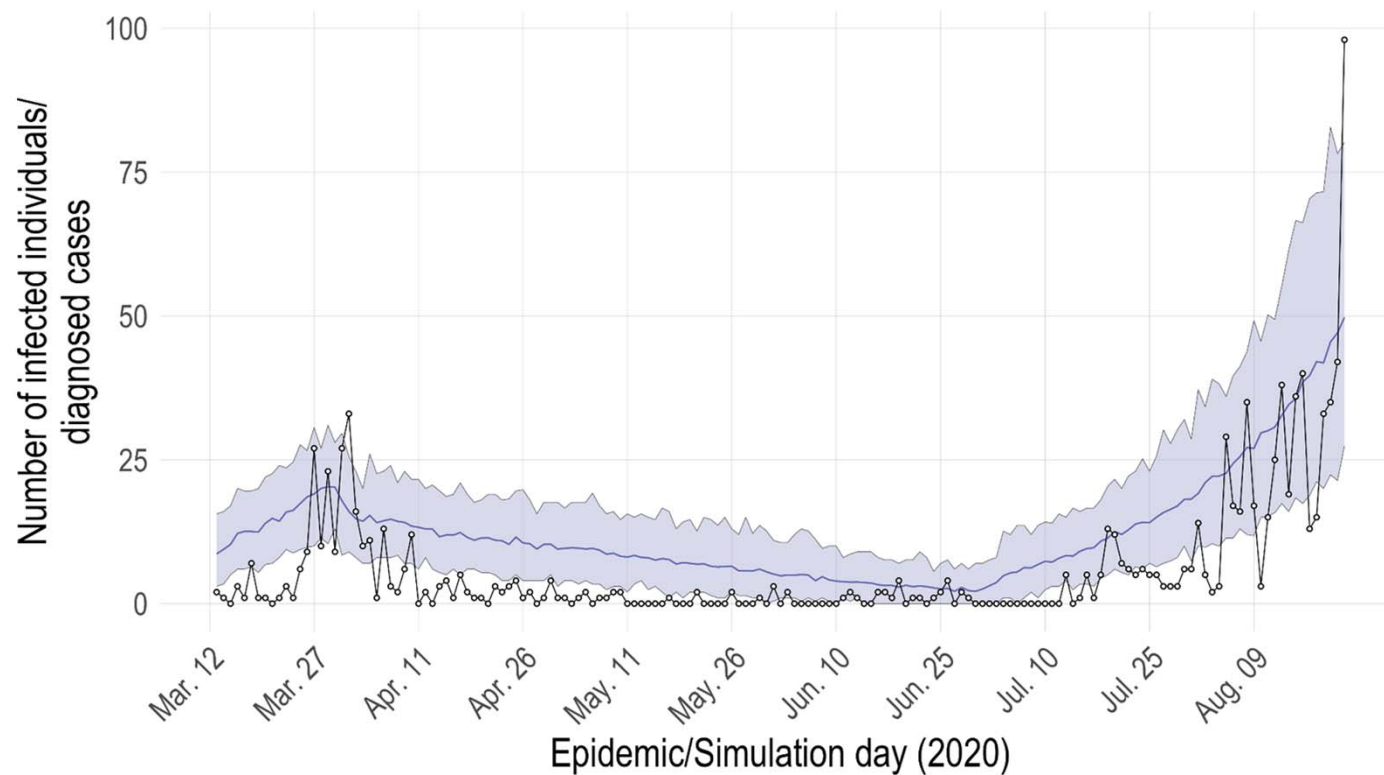
**Baseline –
The First Wave
(Projected Cases -
average)**

Information from March 13
to November 28, 2020.
Manitoba data extracted:
2020-12-03.

COVID-19 NOVEL CORONAVIRUS



Projected cases are extended to a possible range for the model



**Baseline –
The First Wave
(Projected Range
of cases)**

Information from March 13
to November 28, 2020.
Manitoba data extracted:
2020-12-03.

Simulation Scenarios and Projections



Scenario 1 - Extreme

Minimal restrictions and poor compliance lead to a rapid rise in cases.

Scenario 2 - Severe

Some restrictions and poor compliance lead to increased cases.

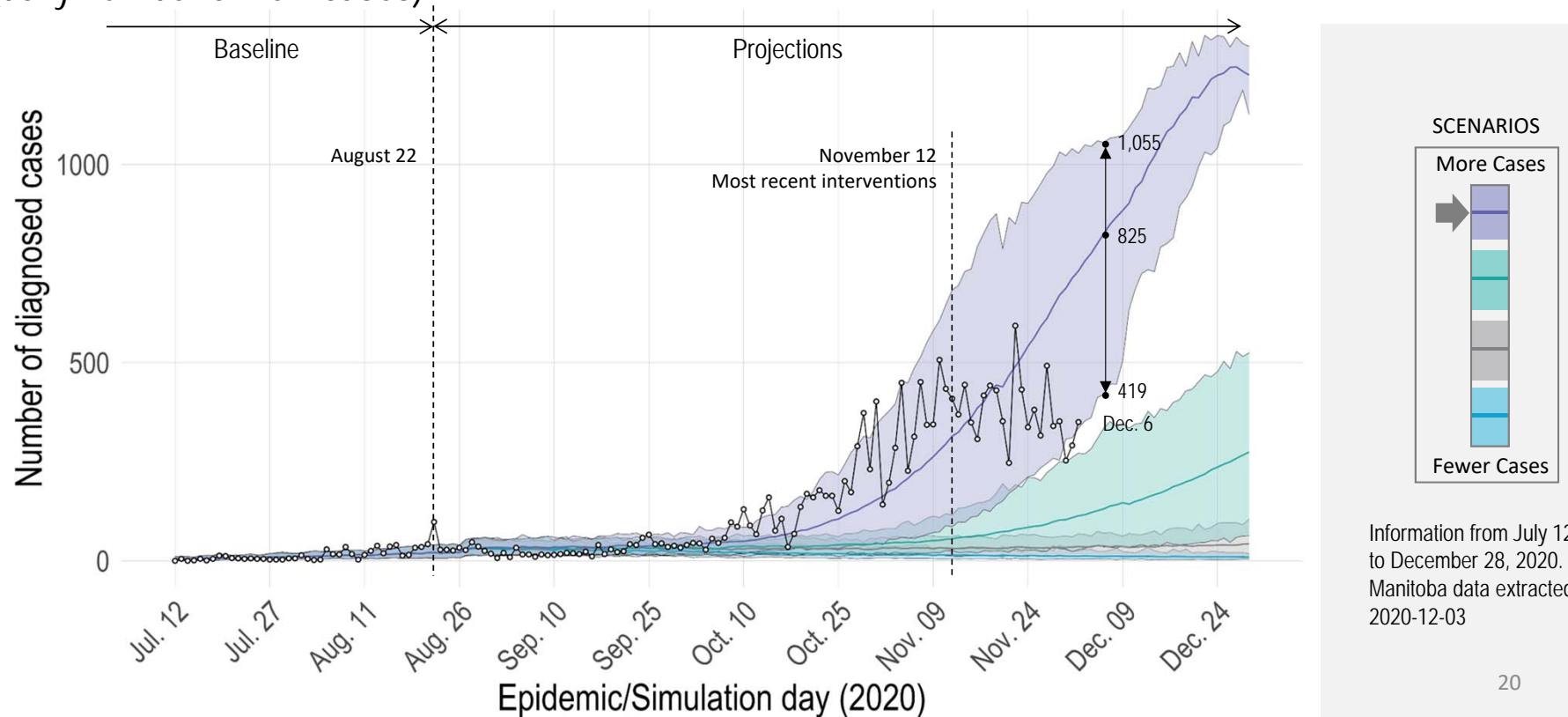
Scenario 3 - Moderate

More restrictions and good compliance lead to manageable case numbers.

Scenario 4 - Controlled

Full restrictions and good compliance (lockdowns) lead to reduced cases.

Projected Number of Diagnosed Cases in Different Scenarios (daily number of new cases)



COVID-19 and the Health-Care System



Admissions



Occupancy



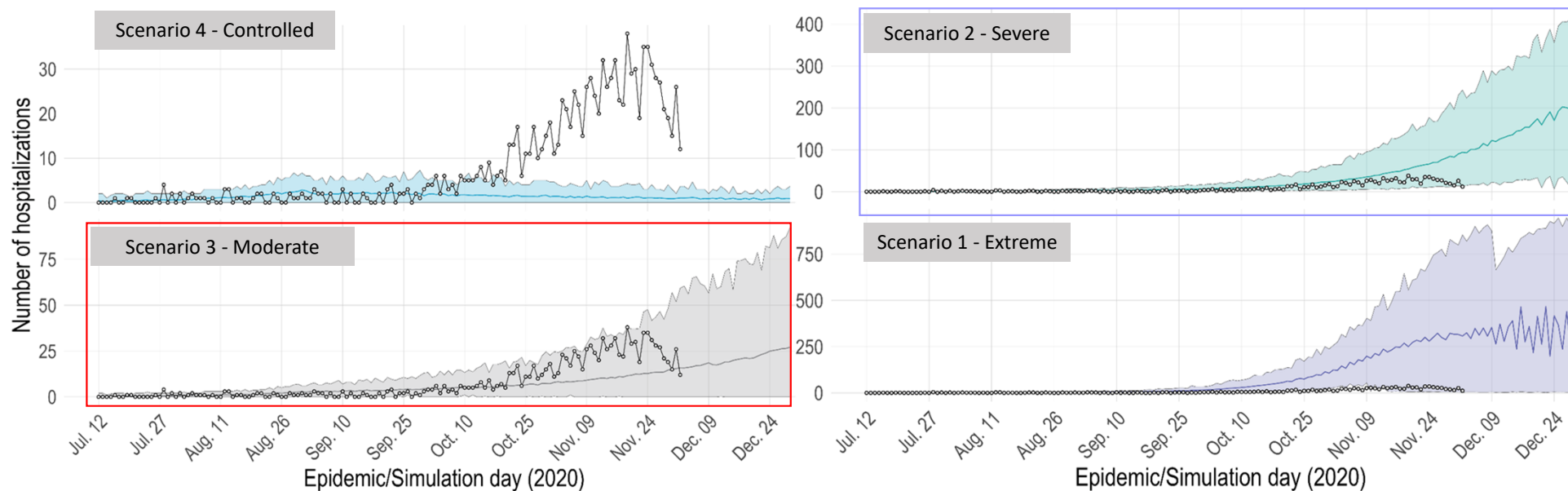
Clinical Beds



ICU

Hospital admissions tracking against Scenario 3 (moderate)

Incident Number of Hospitalizations (daily number of admissions to clinical beds)



Information from March 13 to December 31, 2020.
Manitoba data extracted: 2020-12-03.

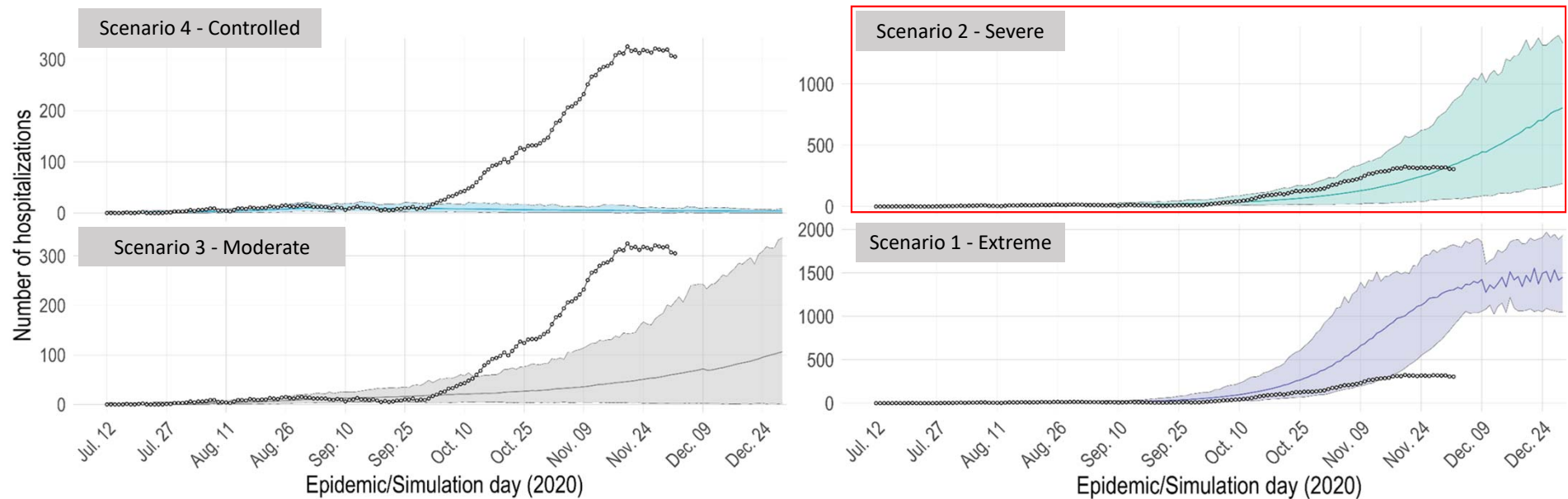
Manitoba:  actual data

Projected: average number of cases 

 Range of possible number of cases

Hospital occupancy tracking against Scenario 2 (severe)


Prevalent Number of Hospitalizations (clinical bed occupancy)



Information from March 13 to December 31, 2020.
Manitoba data extracted: 2020-12-03.

Manitoba:  actual data

Projected: average number of cases 

 Range of possible number of cases

COVID-19 NOVEL CORONAVIRUS



We have expanded hospital capacity
to address this demand

March 2020



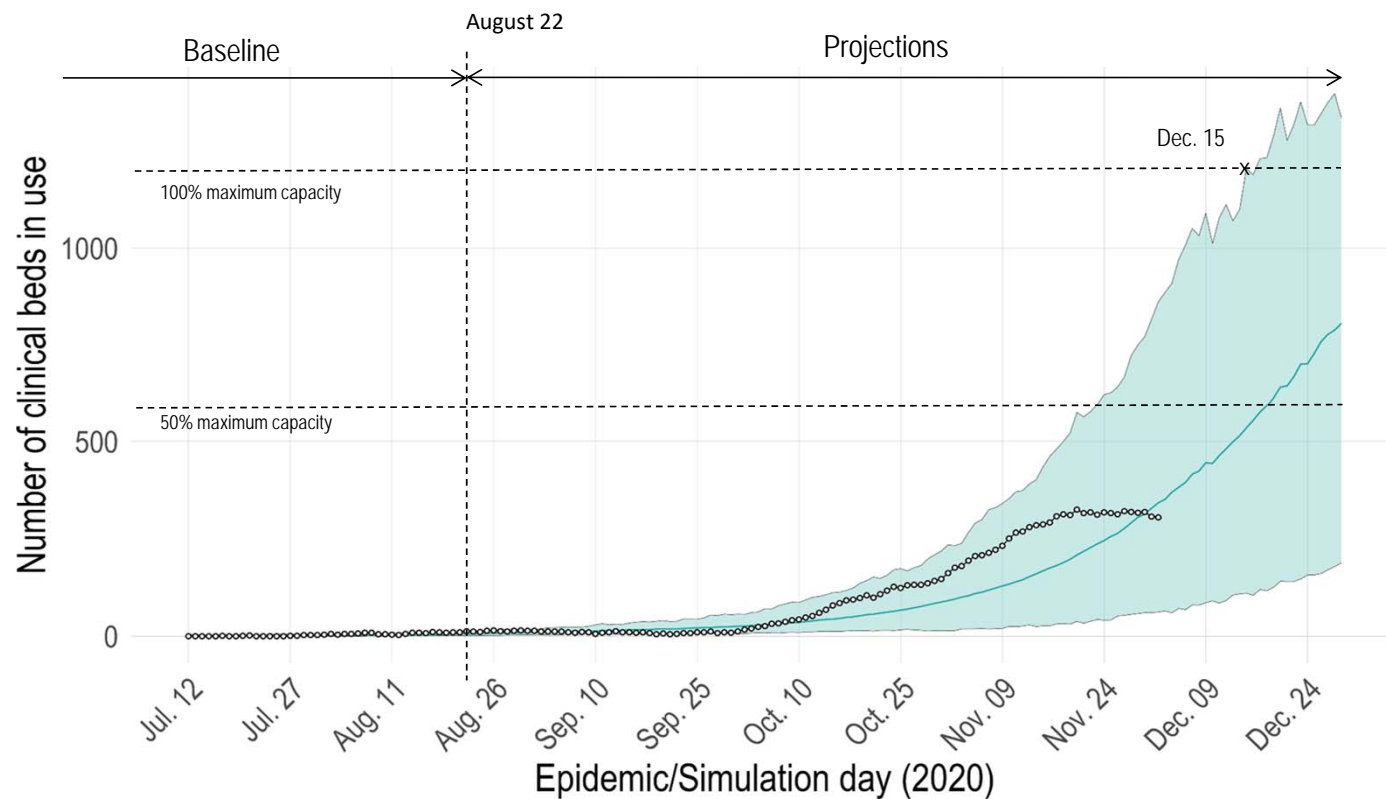
November 2020



Maximum Capacity

126%
Of Baseline

Projections of Clinical Bed Use for COVID-19 Alone



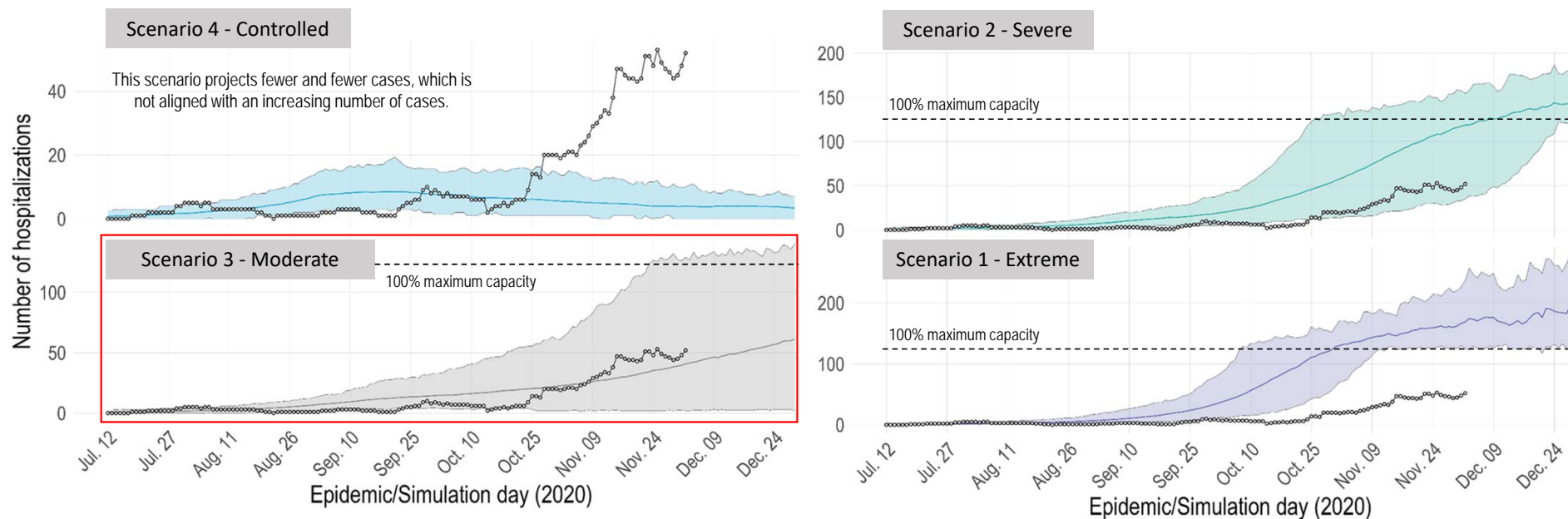
SCENARIOS



Information from July 12 to December 29, 2020.
Manitoba data extracted: 2020-12-03.

ICU admissions tracking against Scenario 3 (moderate)


Prevalent Number of ICU Admissions (ICU occupancy)



Information from March 13 to December 31, 2020.
Manitoba data extracted: 2020-12-03.

Manitoba:  actual data

Projected: average number of cases 

 Range of possible number of cases

COVID-19 NOVEL CORONAVIRUS



We have expanded ICU capacity
to address this demand

March 2020



72

Adult Intensive Care
Hospital Beds

November 2020



173

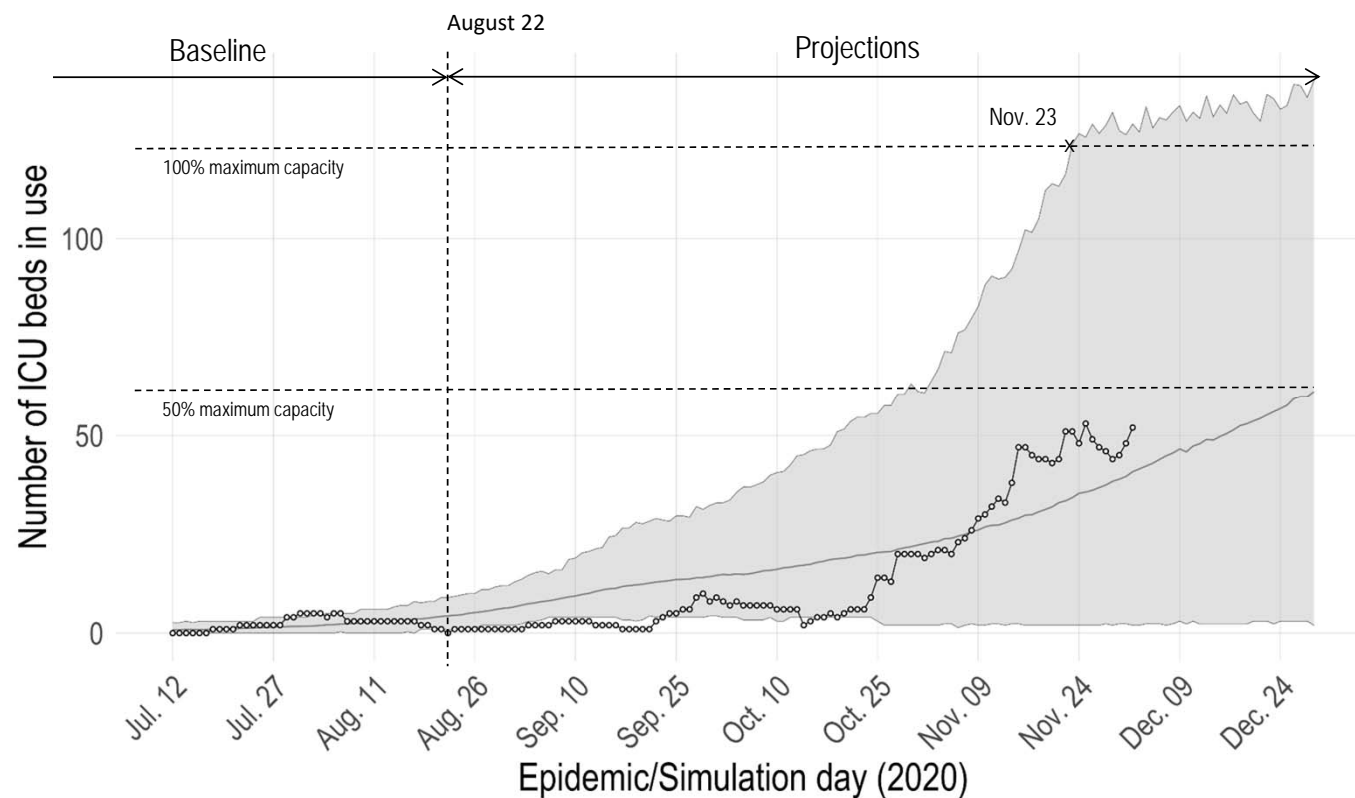
Adult Intensive Care
Hospital Beds

Maximum Capacity

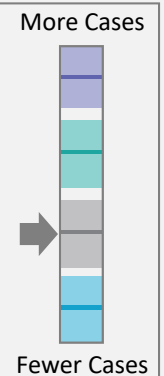
240%

Of Baseline

Projections of ICU Occupancy for COVID-19 Alone



SCENARIOS



Information from July 12 to December 29, 2020.
Manitoba data extracted: 2020-12-03.

Manitoba has taken strong action



- Implemented New Public Health Restrictions
- Increased Health System Capacity
- Introduced New Programs to Support Manitobans

COVID-19 NOVEL CORONAVIRUS

Manitoba 

 manitoba.ca/covid19